

Sarasota County Field Guide To Conservation Lands



Heritage of Stewardship

Stewardship is a unique part of Sarasota County's rich heritage. Before there were government programs to buy land, stewardship could be seen in the land operations of notable community pioneers such as T. Mabry Carlton, Jr., Berryman "Buster" Longino, and others. While working the lands, these families managed them to ensure their sustainable function and value. Today, this heritage is reflected in the voter adopted acquisition programs. The lands these families once managed provide key opportunities and linkages within our conservation network. The people of Sarasota County, in understanding the ecological, historical and cultural value of natural areas, have worked to preserve wild spaces for wildlife habitat and outdoor recreation.

In 1999, voters reaffirmed their commitment to these objectives, showing overwhelming support for an ad valorem tax referendum to support land conservation. These conservation lands help to protect our watersheds, preserve our cultural links to the land, maintain wildlife and plant diversity, and provide outdoor recreation opportunities.

Our ecosystem management seeks to restore and maintain a natural balance which preserves the quality of these diverse landscapes for the benefit of visitors and wildlife. As part of this effort, Sarasota County's environmental professionals apply a variety of specialized methods, including mechanical mowing of vegetation, selective harvesting of timber, prescribed fire, managed grazing, invasive plant and animal management, hydrological restoration, and vegetation planting. Monitoring, often facilitated by volunteers, enables us to gauge our effectiveness and develop responsive approaches.

We balance conservation goals with a focus on nature-based recreation that compliments the natural and cultural resources unique to each land we manage. This framework allows us to accommodate a variety of engaging experiences while maintaining the ecological integrity of the landscape.

This balanced, adaptive program continues Sarasota County's history of stewardship to maintain ecological functions, preserve diverse habitats, and provide recreation for residents and visitors to enjoy our community's wild places.





Table of Contents

Heritage of Stewardship	2
Table of Contents	3
Important Information	4
How to Use this Guide	5
What Kind of ‘Wild’ Are You?	6
Sarasota County Wildlife	10
Locator Map	12
At A Glance Guide	13
Northern Region	14
Bayonne	16
Celery Fields and Palmer Gazebo	18
Circus Hammock.....	20
Old Miakka Preserve	22
Red Bug Slough Preserve.....	24
Rothenbach Park	26
Ted Sperling Park at South Lido	28
Urfer Family Park	30
Central Region.....	32
Deer Prairie Creek Preserve	34
Jelks Preserve	36
Snook Haven Park	38
Sleeping Turtles Preserve North	40
Sleeping Turtles Preserve South	42
T. Mabry Carlton, Jr. Memorial Reserve	44
Southern Region	46
Caspersen Beach	48
Curry Creek Preserve	50
Lemon Bay Park and Environmental Center	52
Manasota Scrub Preserve.....	54
Myakka Islands Point	56
Pocono Trail Preserve.....	58
Shamrock Park and Nature Center	60
South Venice Lemon Bay Preserve	62
Discover More Of Natural Sarasota - Other Places to Visit.....	Back Cover

Important Information

Sarasota County has over 67,000 acres of natural lands to explore. Most areas included in this guide are wild, primitive and unpredictable. Please follow these guidelines to remain safe.

- Have a plan! Let others know where you will be and when you plan to return.
- Before leaving home, confirm SCAT route information and park hours.
- Bring any medications you might need.
- Water, sun-block, a rain jacket, insect repellent and sturdy shoes are recommended for hiking.
- Be aware of your surroundings at all times. Keep a safe distance from aggressive wild animals such as feral hogs and alligators.
- Read and respect notices of land management activities that may be posted and may restrict access to part of the property. Prescribed burning, exotic plant removal and other habitat restoration may be occurring during your visit.
- Take your time and stay on the trails.
- Enjoy the lands that have been preserved for this and future generations.

Hours

April - October	7:30 a.m. - 8 p.m.
November - March	7:30 a.m. - 6 p.m.

Exceptions

Snook Haven Park

Monday	CLOSED
Tuesday - Thursday	9 a.m. - 9 p.m.
Friday-Saturday	11 a.m. - 10 p.m.
Sunday	Noon - 5 p.m.

Rothenbach Park

March - October	6 a.m. - 9 p.m.
November - February	6 a.m. - 6 p.m.

Prohibitions

To ensure public safety and environmental protection, the following activities are not allowed:

- Removal of plants, animals or archeological or cultural resources
- Off-road vehicles
- Open fires
- Smoking
- Unleashed pets, except in *designated* areas

Disclaimer

The Sarasota County Field Guide to Conservation Lands 2011/2012 is intended to be a guide for recreational use only and not relied upon for specific site navigational use. Maps indicated in this guide are for trail direction and amenities only. Sarasota County is not responsible for injuries incurred during visits on conservation lands.

How to Use this Guide

This guide is organized in three regions for ease of navigation: Northern, Central and Southern regions. Within each region, brief site summaries include addresses, GPS coordinates, informative facts, plus a trail map and 'At A Glance' icons which illustrate the amenities and uses featured on the site.

Important information to keep you safe and protect the lands has been provided on the previous page. We hope that you will enjoy the beautiful natural lands of Sarasota County for years to come. To help you make the most of your time, we have provided 'What Kind of Wild Are You?' section that highlights specific opportunities. On the back page, 'Other Places to Visit' lets you discover more of what Sarasota has to offer. Please keep this guide for future visits or share with a friend or family member.

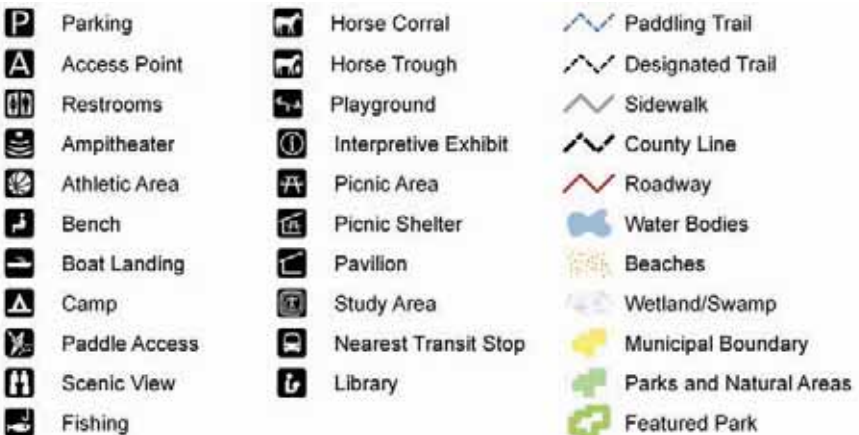
For more information about Sarasota County's natural lands, please refer to our website www.scgov.net, visit Discover Natural Sarasota online at www.discovernaturalsarasota.org, contact the Sarasota County Call Center at 941-861-5000, or scan the 'smartphone' tag located on the back cover.

At A Glance Icons



*Barrier free access limited to designated areas

Map Legend





What Kind of 'Wild' Are You?

Nature Seeker

Nature Seekers are hoping to catch a glimpse of creatures, regardless of whether they walk, crawl, swim or fly, that call our wild places home. Or 'discover' native plants that you have never seen before, like the elusive pine lily. You can explore lands prized for their vast diversity. A surprise awaits you!

Best opportunities

Map #

- 2 Celery Fields and Palmer Gazebo*
- 4 Old Miakka Preserve*
- 10 Jelks Preserve*
- 12 Sleeping Turtles Preserve North*
- 13 Sleeping Turtles Preserve South*
- 20 Manasota Scrub Preserve*
- 21 Myakka Islands Point*
- 24 South Venice Lemon Bay Preserve*



Family Trailblazer

Family trailblazers are adventurers that can discover the wonders of nature and create memories that will last for decades.

Family friendly areas await with paved and unpaved 'easy' trails, playgrounds, pavilions and tables for picnics, scenic bike trails and vast beaches to stroll, to name a few.

Best opportunities

Map #

- 2 Celery Fields and Palmer Gazebo*
- 5 Red Bug Slough Preserve*
- 6 Rothenbach Park*
- 7 Ted Sperling Park at South Lido Beach*
- 8 Urfer Family Park*
- 17 Caspersen Beach*
- 19 Lemon Bay Park and Environmental Center*
- 23 Shamrock Park and Nature Center*



Wildlands Enthusiast

Wildlands Enthusiasts can hear the call of the wild challenging them to experience wilderness at its finest. Expect the unexpected - a true wilderness at your beck and call. With hundreds of miles of primitive hiking, Sarasota County's rugged back country offers a true challenge for hikers.

Best opportunities

Map #

9 Deer Prairie Creek Preserve

14 T. Mabry Carlton, Jr. Memorial Reserve



Weekend Warrior

Whether scouting the perfect picnic spot or looking for a leisurely stroll, Weekend Warriors of all stripes will be sure to find their next great conquest. Create a perfect weekend with short hikes, kayaking, fishing, bird watching, horseback riding, or swimming - whatever you desire.

Best opportunities

Map #

2 Celery Fields and Palmer Gazebo

4 Old Miakka Preserve

7 Ted Sperling Park at South Lido Beach

10 Jelks Preserve

11 Snook Haven Park

12 Sleeping Turtles Preserve North

13 Sleeping Turtles Preserve South

17 Casperen Beach

18 Curry Creek Preserve

20 Manasota Scrub Preserve

24 South Venice Lemon Bay Preserve



Heritage Hound

From cattle ranches to settler homesteads, and turpentine camps to vast celery fields, Heritage Hounds can explore our community's rich and unique history. Keep an eye peeled for historic buildings, lone cattle corrals, signs of native American settlements, and more.

Best opportunities

Map #

8 Urfer Family Park

4 Old Miakka Preserve

9 Deer Prairie Creek Preserve

14 T. Mabry Carlton, Jr. Memorial Reserve

22 Pocono Trail Preserve



What Kind of 'Wild' Are You? *Continued*

Sidewalk Adventurer

For those who need firmer ground beneath them. Paved trails and accessible amenities allow Sidewalk Adventurers to enjoy the beauty of our community's conservation lands.

Try these sites if you seek a short walk on easy, even pavement or to be able to experience scenery without a lot of sweat equity.

Best opportunities

Map #

- 2 Celery Fields and Palmer Gazebo*
- 5 Red Bug Slough Preserve*
- 6 Rothenbach Park*
- 17 Caspersen Beach*
- 19 Lemon Bay Park and Environmental Center*
- 23 Shamrock Park and Nature Center*



Water Wayfarer

With opportunities for boating, paddling, swimming and fishing, Water Wayfarers will discover a variety of experiences to "wet" their appetite.

We have it all from black water rivers to gentle, quiet creeks, lakes, mangrove tunnels, and adventures that take you all the way to the bay waters.

Best opportunities

Map #

- 5 Red Bug Slough Preserve*
- 7 Ted Sperling Park at South Lido Beach*
- 9 Deer Prairie Creek Preserve*
- 14 T. Mabry Carlton, Jr. Memorial Reserve*
- 17 Caspersen Beach*
- 18 Curry Creek Preserve*
- 19 Lemon Bay Park and Environmental Center*
- 23 Shamrock Park and Nature Center*



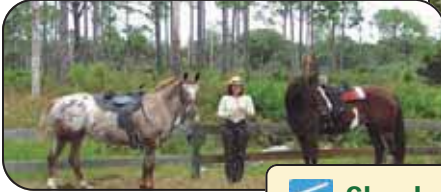
Trail Trotter

Miles of equestrian experiences with user-friendly features like designated horse trailer parking await Trail Trotters. Please remember, state law requires that all riders carry proof of current negative Coggins results at all times.

Best opportunities

Map #

- 9 *Deer Prairie Creek Preserve - North*
- 14 *T. Mabry Carlton, Jr. Memorial Reserve*



Shade Seeker

You are the one combing the area for the perfect shady walk or spot for a special picnic.

There are many areas to choose to delight your 'stay cool' desires.

Best opportunities

Map #

- 3 *Circus Hammock*
- 5 *Red Bug Slough Preserve*
- 6 *Rothenbach Park*
- 7 *Ted Sperling Park at South Lido Beach*
- 12 *Sleeping Turtles Preserve North*
- 13 *Sleeping Turtles Preserve South*
- 21 *Myakka Islands Point*
- 22 *Pocono Trail Preserve*



Biking Buffs

If you prefer pedals and spokes to hiking boots, Sarasota County offers Biking Buffs a variety of opportunities to enjoy the great outdoors by bike. Regardless of your level of experience, you'll find lands that delight both the experienced rough trail bike rider and occasional cyclist.

Best opportunities

Map #

- 2 *Celery Fields and Palmer Gazebo*
- 6 *Rothenbach Park*
- 7 *Ted Sperling Park at South Lido Beach*
- 9 *Deer Prairie Creek Preserve*
- 14 *T. Mabry Carlton, Jr. Memorial Reserve*
- 17 *Caspersen Beach*
- 19 *Lemon Bay Park and Environmental Center*
- 23 *Shamrock Park and Nature Center*

Sarasota County Wildlife

Sarasota County provides critical habitat for many imperiled native species. Protection and management of natural lands ensures these habitats will support future generations of wildlife as well as people.

Take a look at just a few species that you might encounter on a journey through one of our community's natural areas:



Florida Scrub-Jays

Sarasota County features diverse natural communities, like native oak scrub with sandy, dry soil which provides critical habitat for the endangered Florida scrub-jay.

Sea Turtles

Each sea turtle nesting season (May 1 - Oct 31), threatened loggerhead and endangered green sea turtles return to Sarasota County's beaches which host the highest density of sea turtle nesting on the Gulf Coast of Florida.



Bald Eagles

State and federally protected bald eagles are found throughout the state year-round with nesting season occurring from October 1 - May 15.

West Indian Manatees

The warm waters of Sarasota County's bays, rivers and creeks provide protected sites for the endangered West Indian manatee. Areas such as world-renowned Warm Mineral Springs in North Port, with its year-round 87 degrees water, entice manatees to return every winter.



Gopher Tortoises

Gopher tortoises, a land tortoise, can be found throughout much of Florida. Considered to be a keystone species, their burrows provide refuge for nearly 400 other animal species including several imperiled species.

Florida Panthers

The endangered Florida panther, with a home range of 200 square miles, has been documented in Sarasota County. There are an estimated 100-120 Florida panthers remaining.



Notable Species

Map #	Page	Sites	Photo Page	Birds																Mammals				Reptiles					
				white ibis	tricolored heron	bald eagle	snowy egret	sandhill crane	roseate spoonbill	reddish egret	osprey	little blue heron	limpkin	least tern	Florida scrub-jay	crested caracara	brown pelican	black skimmer	American oystercatcher	White-tailed deer	Sherman's fox squirrel	Florida panther	Florida manatee	American alligator	Eastern indigo snake	Florida brown snake	gopher tortoise	loggerhead sea turtle	Peninsula ribbon snake
1	16	Bayonne																											
2	18	Celery Fields and Palmer Gazebo																											
3	20	Circus Hammock																											
4	22	Old Miakka Preserve																											
5	24	Red Bug Slough Preserve																											
6	26	Rothenbach Park																											
7	28	Ted Spering Park at South Lido																											
8	30	Urfer Family Park																											
9	34	Deer Prairie Creek Preserve																											
10	36	Jelks Preserve																											
11	38	Snook Haven																											
12	40	Sleeping Turtles Preserve North																											
13	42	Sleeping Turtles Preserve South																											
14	44	T. Mabry Carlton, Jr. Memorial Reserve																											
17	48	Caspersen Beach																											
18	50	Curry Creek Preserve																											
19	52	Lemon Bay Park and Environmental Center																											
20	54	Manasota Scrub Preserve																											
21	56	Myakka Islands Point																											
22	58	Pocono Trail Preserve																											
23	60	Shamrock Park and Nature Center																											
24	62	South Venice Lemon Bay Preserve																											

Northern

Central

Southern

Locator Map

Match the *Map Reference* numbers on the Locator Map to the At A Glance Guide on the left



At A Glance Guide

Page
Map #

Sites

1	16	Bayonne																				
2	18	Celery Fields and Palmer Gazebo																				
3	20	Circus Hammock																				
4	22	Old Miakka Preserve																				
5	24	Red Bug Slough Preserve																				
6	26	Rothenbach Park																				
7	28	Ted Sperling Park at South Lido Beach																				
8	30	Urfer Family Park																				
9	34	Deer Prairie Creek Preserve																				
10	36	Jeiks Preserve																				
11	38	Snook Haven Park																				
12	40	Sleeping Turtles Preserve North																				
13	42	Sleeping Turtles Preserve South																				
14	44	T. Mabry Carlton, Jr. Memorial Reserve																				
15		Oscar Scherer Buffer																				
16		Eastern Ranchlands - Walton Ranch																				
17	48	Caspersen Beach																				
18	50	Curry Creek Preserve																				
19	52	Lemon Bay Park and Environmental Center																				
20	54	Manasota Scrub Preserve																				
21	56	Myakka Islands Point																				
22	58	Pocono Trail Preserve																				
23	60	Shamrock Park and Nature Center																				
24	62	South Venice Lemon Bay Preserve																				
Scheduled to open in 2012																						
Recent Acquisition - Site plans to be developed in 2012																						
Northern							Central							Southern								

Northern Region





1 Bayonne

8050 Springfield Dr, Sarasota, 34231

Size

11 acres

GPS Coordinates

-82.501646, 27.235363

About the Property

Acquired in 2002, Bayonne protects important links to our past and unfolds a suburban retreat for day hikers and picnickers as well as several imperiled species.

Named for an early development that was planned but never built, this site now preserves one of the last undeveloped areas of coastal scrub habitat north of Osprey in Sarasota County. The surrounding areas, once used by Native Americans, are now a bustling commercial and residential center.

Directions and Parking

From I-75 Exit 205 – Clark Rd/FL-72 W. Travel west on Clark Rd/FL-72 W for 3.1 miles. Turn left onto Beneva Rd, travel 2.5 miles. Turn right onto Tamiami Trail, travel 0.3 miles. Turn left onto Springfield Dr (portions unpaved). Parking is available at the adjacent church. The entrance is a short walk from the parking area.

Restrooms and Water

None available on site

SCAT Bus Stop and Route

Monday through Saturday - Route 17;
Sunday - Route 1713



What Visitors Might See

Gopher tortoises, grey squirrels, bald eagles, osprey, great horned owl, song birds, and an assortment of native plants including coontie, a variety of wildflowers, and all three types of scrub oaks

Recreational Opportunities

Hiking, Picnicking

- Approximately 1.5 miles of sandy, unpaved sunny trails with rest station benches. Trails are most comfortable during the cooler winter months
- Unmarked trails
- Some trails experience flooding seasonally and after heavy rainfall

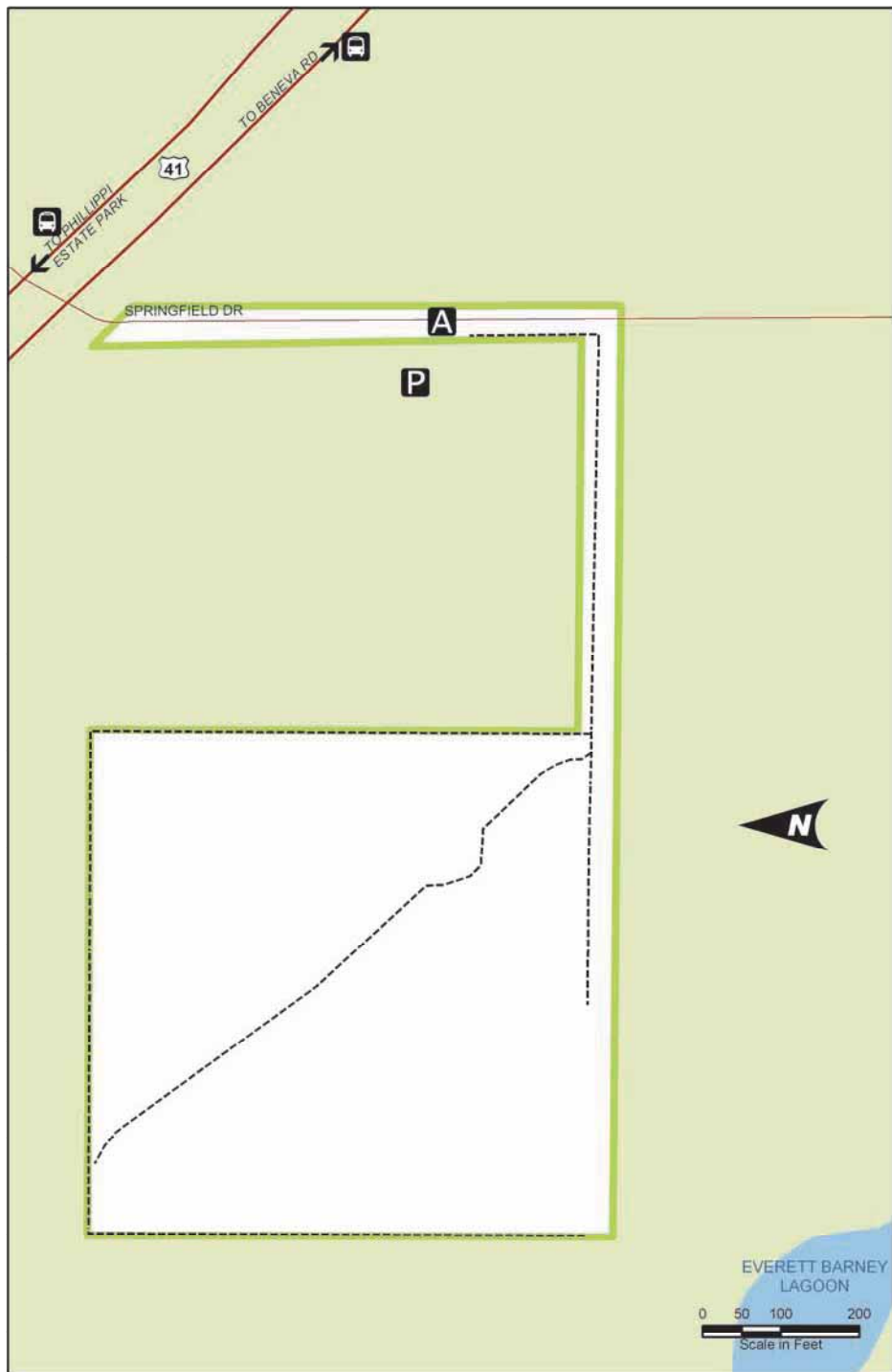
Nearby Recreation Lands

- Potter Park
- Legacy Trail
- Stoneybrook Nature Trail

Watershed

Little Sarasota Bay





At A Glance:



2 Celery Fields and Palmer Gazebo

6799 Palmer Blvd, Sarasota, 34240

Size

450 acres

GPS Coordinates

-82.433664, 27.325275

About the Property

Acquired in 1995 and newly completed in May 2011, the Celery Fields and Palmer Gazebo is an important regional stormwater facility, handling stormwater runoff from approximately 3,500 acres of the upper Phillippi Creek Basin. Formerly celery fields, the created wetlands now help to improve water quality and provide important habitat.

The area has gained renown as a favored site among birders. Surveys of the area conducted by the Sarasota Audubon Society have noted more than 200 species of birds. At 75-feet-tall, the observation mound affectionately known as 'Mt. Celery', allows visitors to enjoy expansive views of the landscape.

Directions and Parking

From I-75 Exit 210 – Fruitville Rd/FL-780. Travel east on Fruitville Rd for 0.7 miles. Turn left onto Coburn Rd, travel 0.7 miles. Continue onto Apex Rd, travel 0.4 miles. Turn left onto Palmer Blvd, travel 0.8 miles. Entrance is on the left, parking area is near the gazebo.

Restrooms and Water

None available on site at this time; Nearby restroom available at Fruitville Library, 100 Coburn Road; Future onsite restrooms planned

SCAT Bus Stop and Route

Monday through Saturday - Routes 1 and 1A



What Visitors Might See

A wide range of birds including herons, egrets, gulls, terns, anhinga, cormorants, limpkins, sparrows and wrens

Recreational Opportunities

Hiking, Picnicking, Playground, Birding, Fishing, Biking

- Approximately 9 miles sunny paved and unpaved trails with views of wetlands throughout
- Palmer Gazebo, named for Bertha Palmer

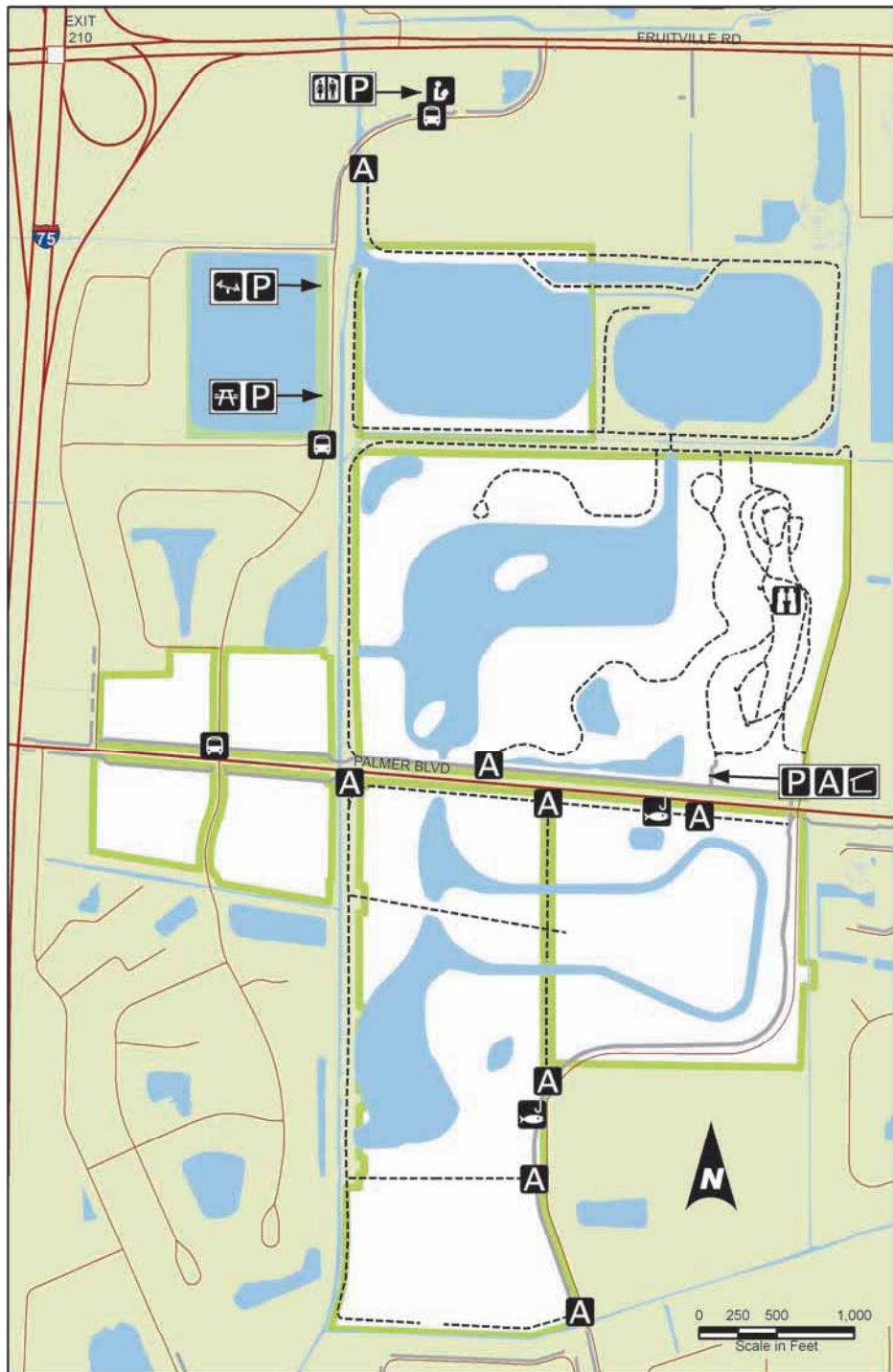
Nearby Recreation Lands

- Urfer Family Park
- Nathan Benderson Park
- Colonial Oaks Park

Watershed

Roberts Bay North





At A Glance:



Circus Hammock

4572 17th St, Sarasota, 34235

Size

21 acres

GPS Coordinates

-82.480816, 27.350356

About the Property

Acquired in 2006, Circus Hammock is an urban preserve that protects a diverse assemblage of plants and provides a beautiful, peaceful green space in the midst of residential neighborhoods.

Located near the historic winter quarters of the Ringling Brothers & Barnum and Bailey Circus, anecdotal evidence suggests that this area may have also been frequented by circus workers and performers. Follow their steps as you meander through the shady hammock of oaks, red maple, hackberry, and American elm.

Directions and Parking

From I-75 Exit 210 – Fruitville Rd/FL-780. Travel west on Fruitville Rd for 0.9 miles. Turn right onto Honore Ave, travel 1 mile. Turn left onto 17th St, travel 1 mile. Turn left into 17th Street Paw Park. Preserve entrance is on the right. Parking area is at 17th Street Paw Park, on left, a short walk to the preserve's entrance.

Restrooms and Water

None available on site; Portable toilet available at adjacent 17th Street Park

SCAT Bus Stop and Route

Monday through Sunday - Route 6



What Visitors Might See

Woodpeckers, box turtles, red-shouldered hawks, barred owls and an assortment of song birds

Recreational Opportunities

Hiking, Picnicking

- Approximately 1.5 miles of marked, unpaved, shady trails
- Most of the trails experience flooding seasonally and after heavy rainfall

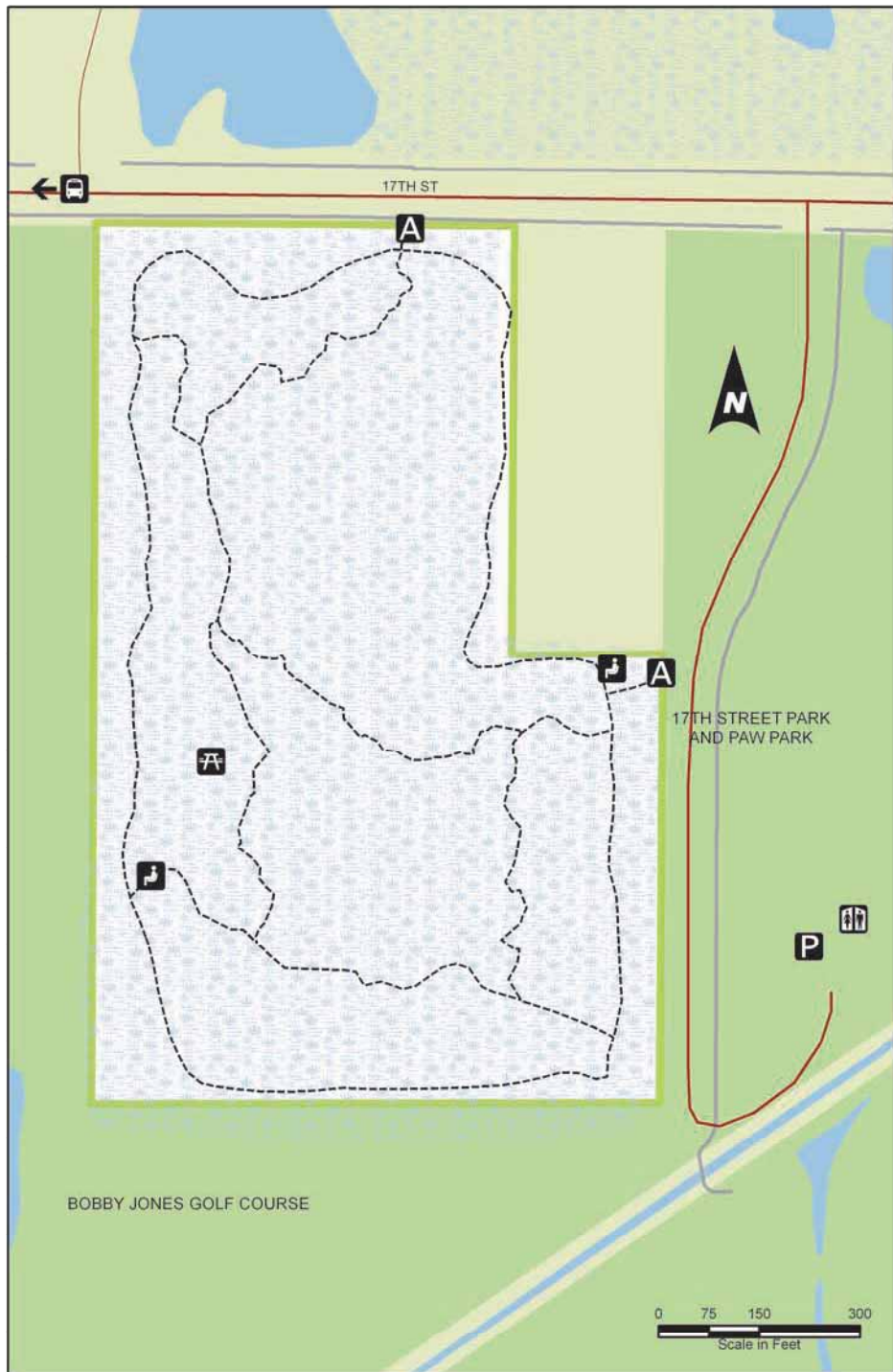
Nearby Recreation Lands

- Bobby Jones Golf Course
- 17th Street Park
- Nathan Benderson Park

Watershed

Sarasota Bay





At A Glance:



4 Old Miakka Preserve

251 Myakka Rd, Sarasota, 34240

Size

132 acres

GPS Coordinates

-82.262337, 27.334184

About the Property

Acquired in 2006, Old Miakka Preserve is named after Old Miakka, the historic rural community where the preserve is located. As you experience the tranquil beauty of the Old Miakka preserve, enjoy the variety of plant life here that inspired Tim Cash (1954-1993) a local nursery owner and founding member of the Serenoa Chapter of the Florida Native Plant Society, who was also active in the Old Miakka community. A trail, named in his honor, passes through subtle changes in habitat, allowing visitors to experience the natural diversity that Tim admired.

Directions and Parking

From I-75 Exit 210-Fruitville Road, travel east on Fruitville Road for approx 11.3 miles. Continue straight on the Fruitville Road Extension for .04 miles. Entrance is on the right, parking area just inside the entrance gate.

Restrooms and Water

None available on site

SCAT Bus Stop and Route

No routes available



What Visitors Might See

Gopher tortoises, swallowtail butterflies, song and wading type birds and an assortment of wildflowers, such as spiderwort and beautyberry

Recreational Opportunities

Hiking, Picnicking, Birding

- 4 miles unpaved, marked trails through systems of hammocks and seasonal wetlands, including the 1.5-mile Tim Cash Loop Trail
- Some of the trails experience flooding seasonally and after heavy rainfall including creek and ditch crossings

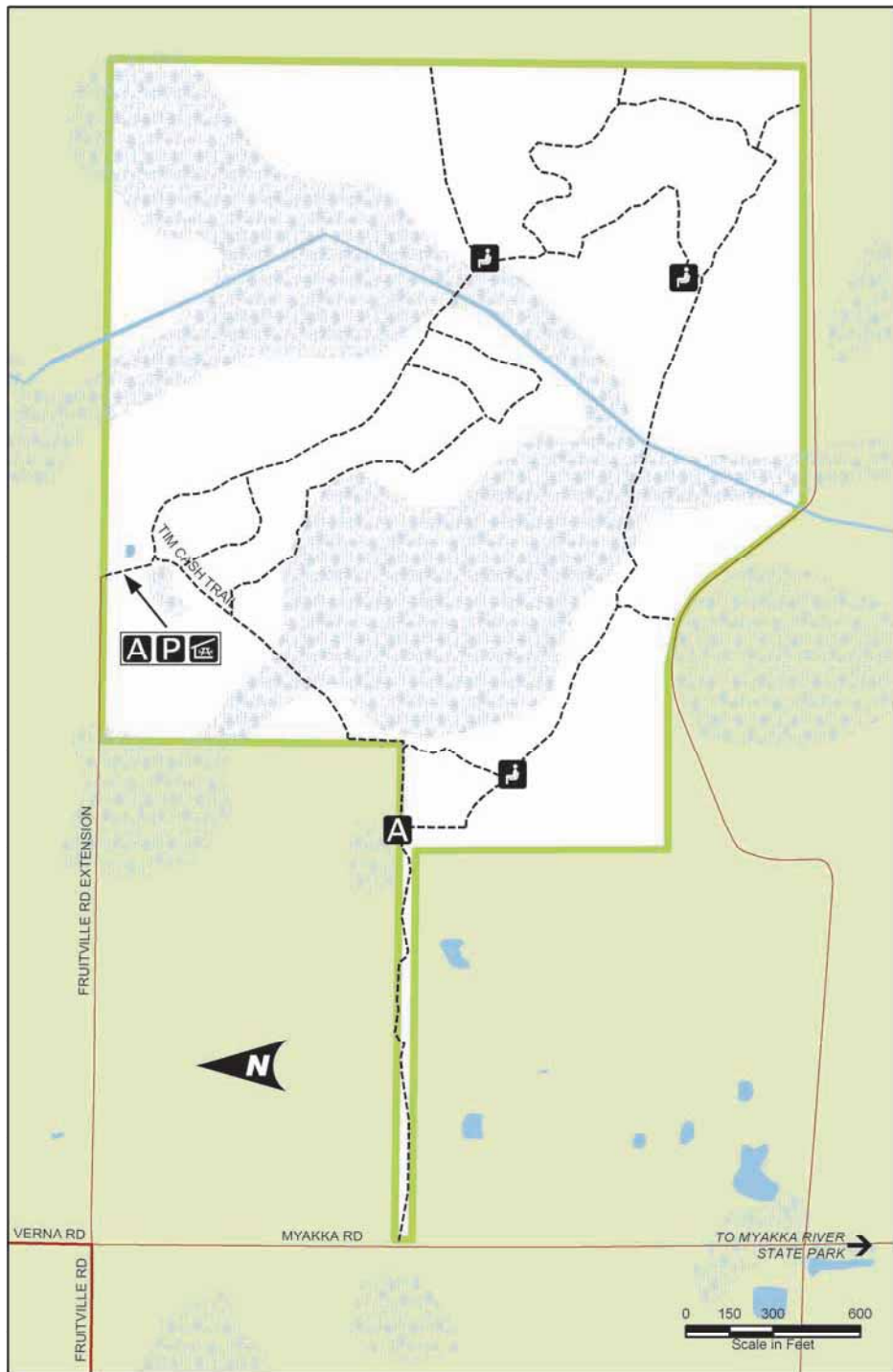
Nearby Recreation Lands

- Myakka River State Park

Watershed

Myakka River





At A Glance:



5 Red Bug Slough Preserve

5200 Beneva Rd, Sarasota, 34231

Size

72 acres

GPS Coordinates

-82.497745, 27.277198

About the Property

Acquired in 2000 and 2001 with funding assistance provided by Florida Communities Trust, Red Bug Slough Preserve is a small oasis of natural Florida in the midst of suburban Sarasota.

The slough, named for the cotton stainer bug, flows through the preserve and forms a calm lake. Hiking and biking trails through the preserve are shaded by pines and palmettos that give way to oaks draped with Spanish moss. Before ending your visit, stop to rest on one of the park benches that overlook the lake.

Directions and Parking

From I-75 Exit 207 – Bee Ridge Rd/FL-758 W. Travel west on Bee Ridge Rd for 2.9 miles. Turn left onto Beneva Rd, travel 1.4 miles. Entrance is on the right, limited parking is available a short distance from a walk-through access.

Restrooms and Water

On site facilities to be completed in 2012

SCAT Bus Stop and Route

Monday through Sunday - Route 6



What Visitors Might See

Grey squirrels, marsh rabbits, river otters, an occasional alligator, song birds, and an assortment of wildflowers, such as partridge pea and frostweed

Recreational Opportunities

Hiking, Picnicking, Playground, Birding

- Approximately 2-miles marked, unpaved shaded and sunny trails with rest station benches viewing the slough
- Some of the trails experience flooding seasonally and after heavy rainfall
- Leashed dogs are allowed at the preserve

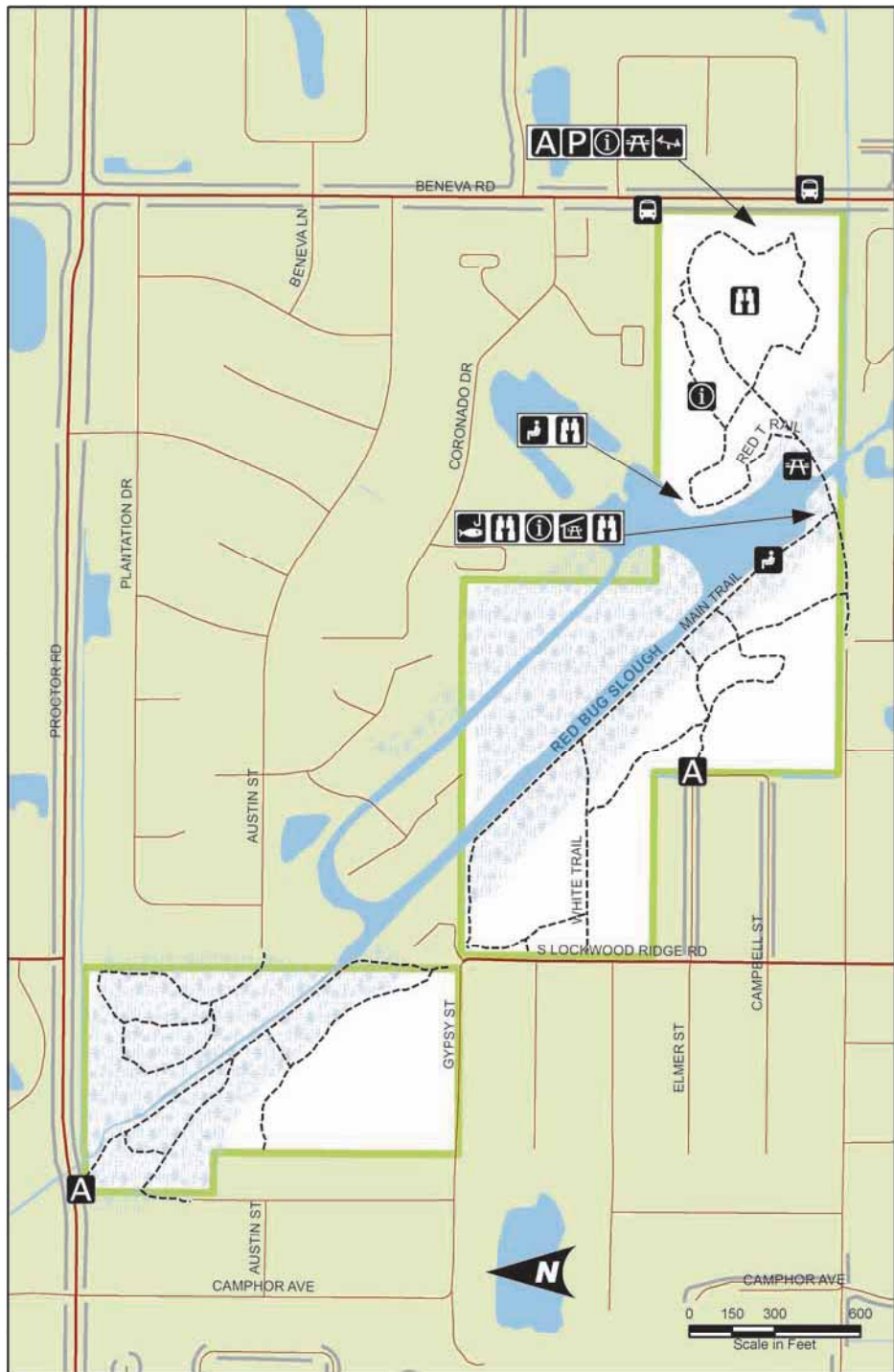
Nearby Recreation Lands

- Bee Ridge Park
- Phillippi Estate Park

Watershed

Sarasota Bay





At A Glance:



6 Rothenbach Park

8650 Bee Ridge Rd, Sarasota, 34241

Size

450 acres

GPS Coordinates

-82.40001, 27.298663

About the Property

Rothenbach Park is a closed and capped landfill which has been "recycled" into open vistas and a delightful public park, a prime example of turning trash into treasure! Named for Walter J. Rothenbach, Jr., a 40-year employee of Sarasota County who embraced nature as Director of Parks and Recreation for many years, this is a true community park offering many opportunities for recreational and nature based fun.

Embracing sustainability, the park is home to the Florida Power and Light (FPL) solar array which provides electrical power to the FPL grid, one of the first in Southern Florida. The amenities include some of the most advanced recycling and sustainable building techniques and materials available.

Directions and Parking

From I-75 Exit 207 - Bee Ridge Rd. Travel east on Bee Ridge Road for 3 miles to the end. Follow park road to right to entrance, parking area is near playgrounds.

Restrooms and Water

Public restrooms and water available at the pavilion

SCAT Bus Stop and Route

No routes available



What Visitors Might See

White-tailed deer, American alligator, armadillo, meadowlarks, red-shouldered hawks, black-bellied whistling ducks, wood ducks, coots, moorhens, great blue herons, little blue herons, pileated woodpeckers, rabbits, red-bellied woodpeckers and downy woodpeckers

Recreational Opportunities

Hiking, Picnicking, Playgrounds, Biking

- Approximately 5-miles paved and unpaved sunny and shady trails with benches
- Mobility limited accessibility
- Picnic pavilion available for reservation, call 941-861-5000 for more information

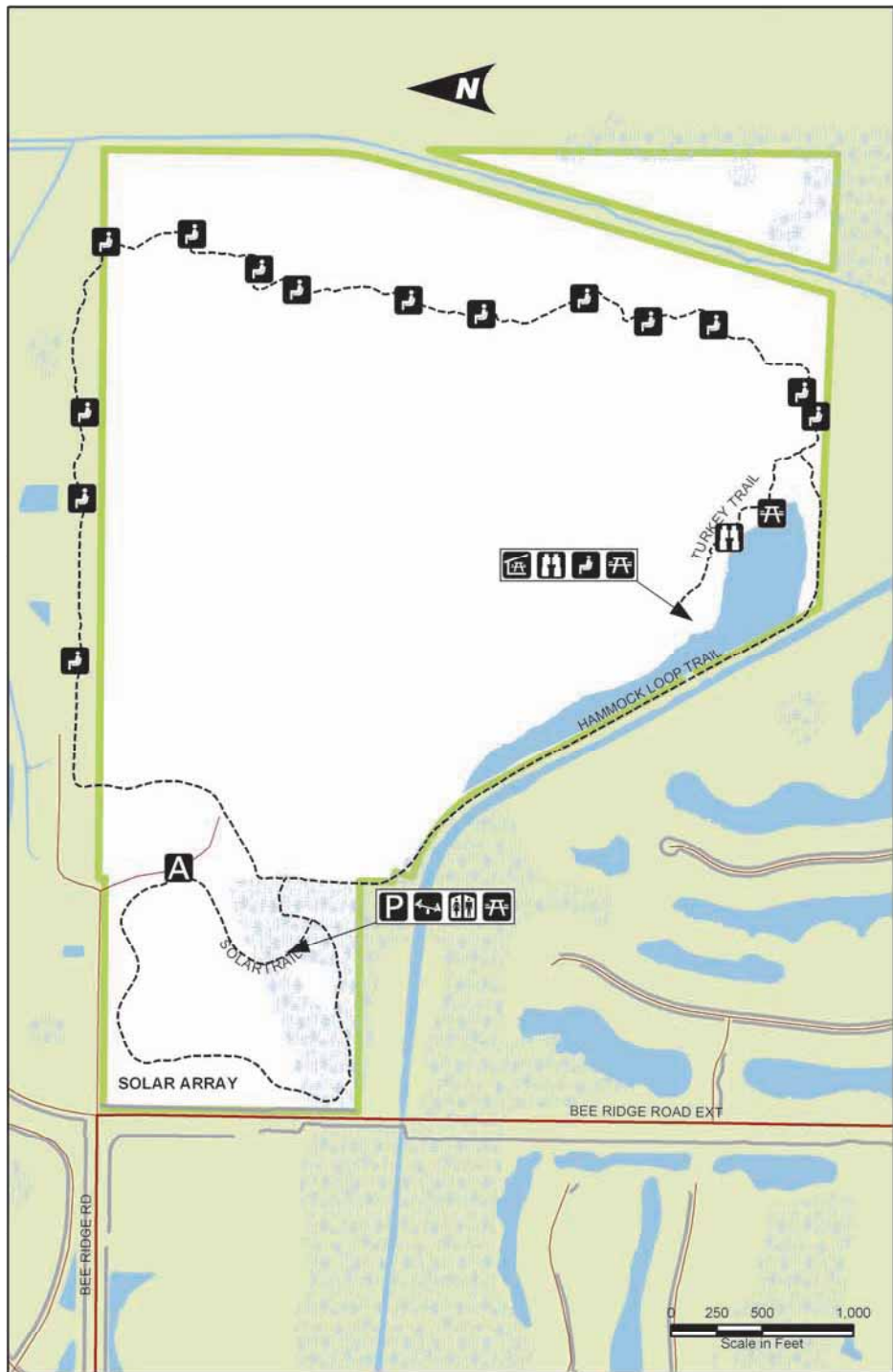
Nearby Recreation Lands

- Lakeview Park and Paw Park

Watershed

Sarasota Bay and Dona/Roberts Bay





At A Glance:



7 Ted Sperling Park at South Lido Beach

2201 Ben Franklin Dr, Lido Key, 34236

Size

100 acres

GPS Coordinates

-82.567128, 27.300146

About the Property

Acquired in 1972 as part of the first major citizen-led acquisition initiative, this park is named for Ted Sperling, a former City of Sarasota commissioner and president of Save Our Bays, who led several campaigns for public acquisition of beach properties including the land at South Lido Beach.

During the nineteenth century Lido Key consisted of a series of islands separated by shifting channels. In the early 1920's the islands were purchased by John Ringling who greatly manipulated the shapes of the islands by moving millions of cubic feet of sand. Ringling named one of the newly created islands after the Italian word for beach, "lido." Occupying the southern tip of Lido Key, the park interacts with four bodies of water and offers a wide selection of experiences.

Directions and Parking

From I-75 Exit 210 – Fruitville Rd. Travel west on Fruitville Rd for 6 miles. Turn left onto N Tamiami Trail, travel 0.2 miles. Turn right onto N Gulfstream Ave, travel 0.2 miles. Continue onto John Ringling Causeway which becomes John Ringling Blvd for 2.1 miles. At St. Armand's Circle, take the Lido Beach turn off the traffic circle to continue on John Ringling Blvd for 0.3 miles. Turn left onto Ben Franklin Dr, travel 1.5 miles to the entrance. Parking area is inside the gate.

Restrooms and Water

Public facilities available

SCAT Bus Stop and Route

Monday through Saturday - Route 4



What Visitors Might See

Shoreline and wading birds, coastal native plants like: seagrape, red and black mangrove, sea purslane, beach morning glory and sea oats

Recreational Opportunities

Hiking, Picnicking, Playground, Birding, Boating, Paddling, Fishing, Biking, Swimming, Beach Volleyball

- The southern portion of the park offers shaded nature trails and picnic area, beach access and wonderful water views
- The north end of the park includes a picnic area as well as access to the Lido Paddling Trail that winds through exotic mangrove tunnels
- Lifeguards on duty on weekends in the summer months

Nearby Recreation Lands

- Lido Beach
- Ken Thompson Park

Watershed

Sarasota Bay





At A Glance:



8 Urfer Family Park

4000 Honore Ave, Sarasota, 34233

Size

55 acres

GPS Coordinates

-82.464705, 27.294935

About the Property

Urfer Family Park highlights a unique combination of conservation, recreation, and learning opportunities per the vision of Jack and Thelma Urfer, the park's namesakes and benefactors.

In addition to playgrounds for toddlers through teens and a 1-mile nature trail, the park is also home to a small working cattle ranch and the C. B. Wilson House, constructed circa 1917. The historic home provides space for park offices and public meetings.

As Sarasota County's first Silver LEED certified park, Urfer Family Park represents a new milestone in sustainability and livability in a suburban setting.

Directions and Parking

From I-75 Exit 207 - Bee Ridge Rd. Travel west on Bee Ridge Rd for 0.9 miles. Turn left onto Honore Ave, travel 0.1 miles. Entrance is on the right., parking area is at the entrance.

Restrooms and Water

Public facilities available on site

SCAT Bus Stop and Route

Monday through Saturday - Route 14;
Sunday - Route 1411



What Visitors Might See

Cattle, deer, possum, raccoons, turtles, various snakes, birds, alligators and native plants

Recreational Opportunities

Hiking, Picnicking, Playgrounds, Bicycling

- Approximately 2 miles rated easy nature trail through diverse ecosystems including boardwalks over wetlands
- Picnic pavilion available for reservation, call 941-861-5000 for more information

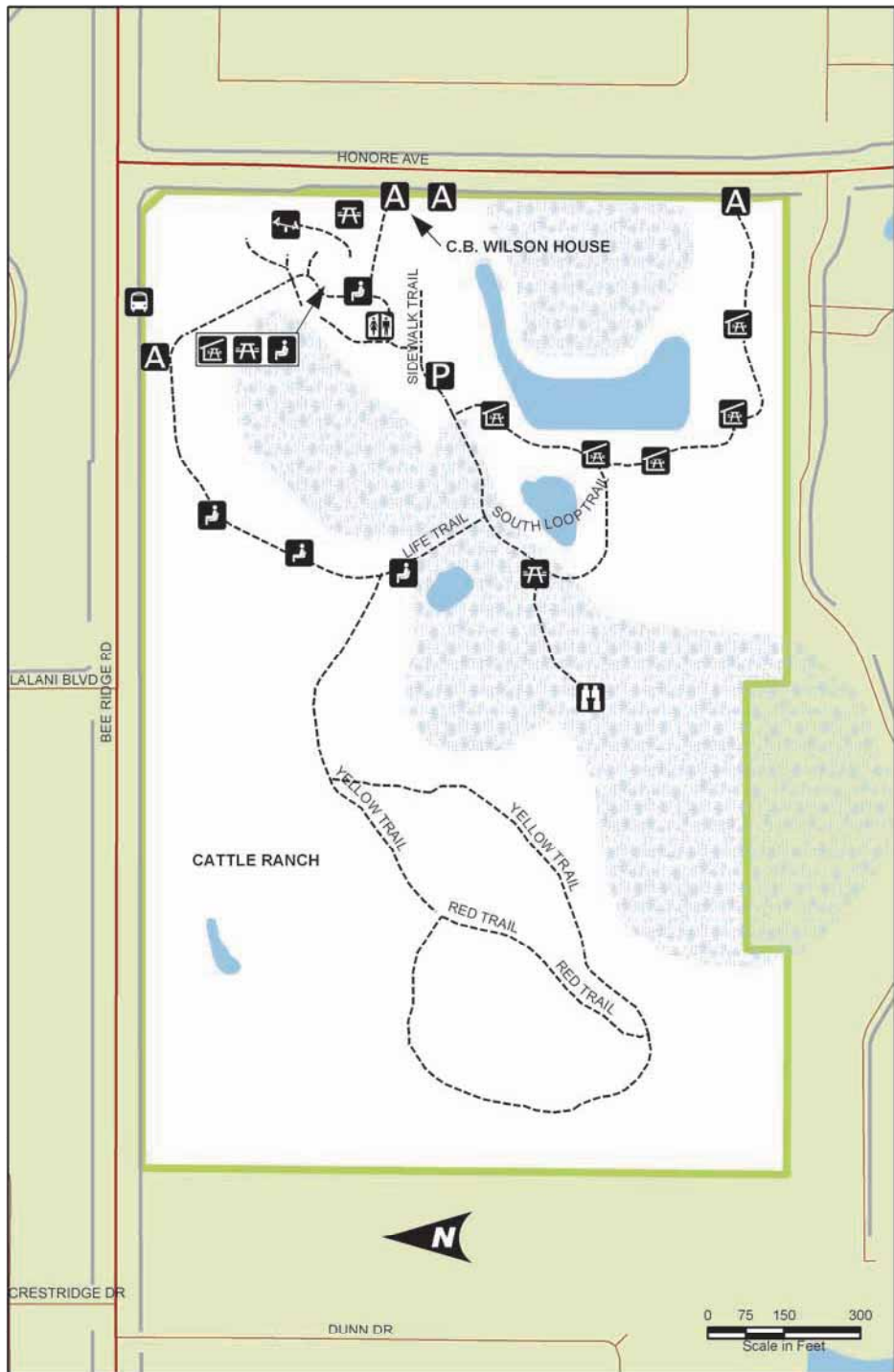
Nearby Recreation Lands

- Celery Fields and Palmer Gazebo
- Colonial Oaks Park

Watershed

Sarasota Bay



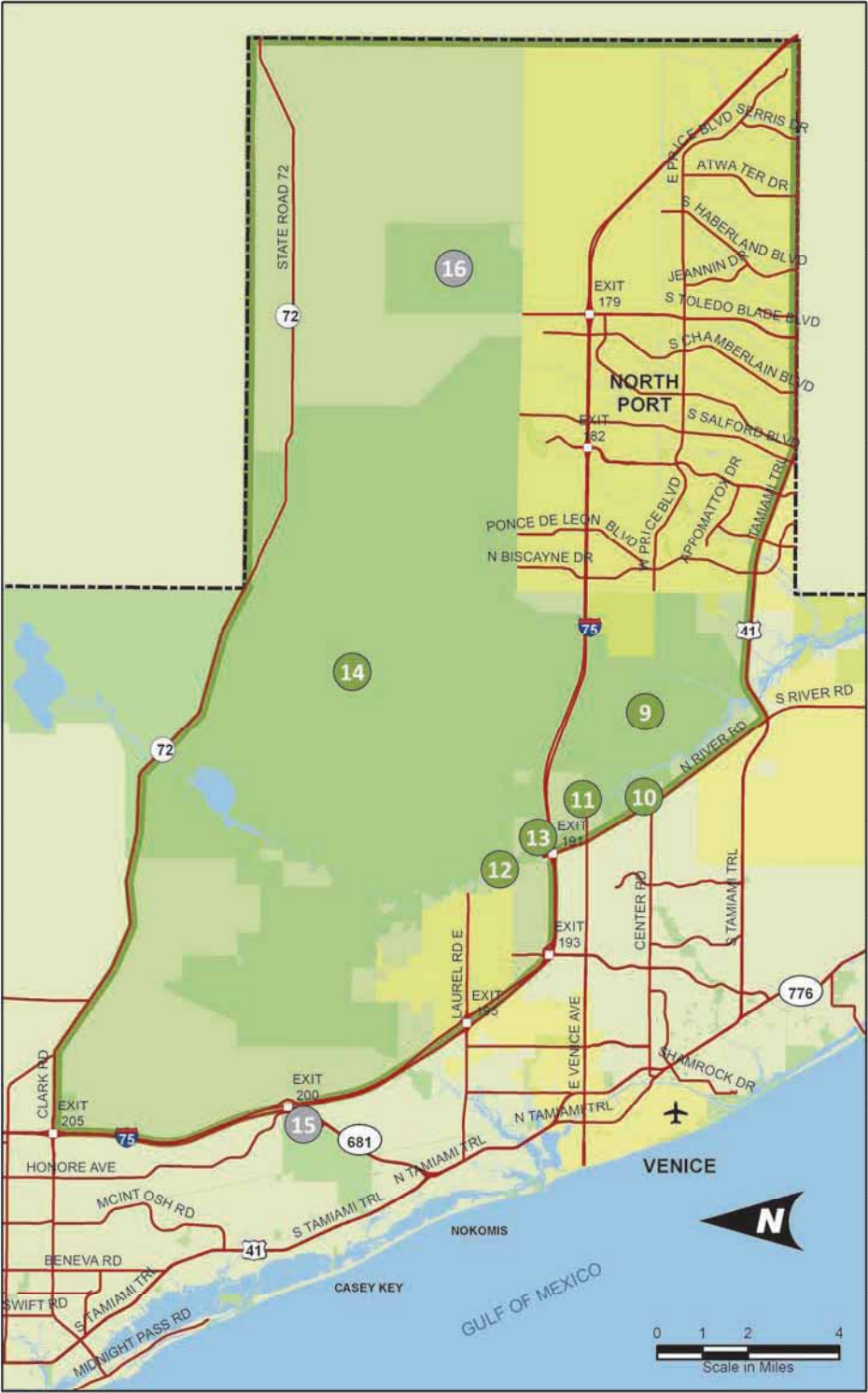


At A Glance:



Central Region





9 Deer Prairie Creek Preserve

North: 7001 Forbes Trl, Venice, 34292
South: 10201 S Tamiami Trl, Venice, 34287

Size

6,439 acres

GPS Coordinates

North: -82.318981, 27.107847

South: -82.288305, 27.048405

About the Property

Acquired between 2000 and 2004 through a partnership with the Southwest Florida Water Management District, Deer Prairie Creek Preserve helps protect the floodplain of the Myakka River, one of two rivers designated as "Wild and Scenic." The preserve has a variety of native habitats, including pine flatwoods, prairie hammock and seasonal wetlands providing scenic overlooks along the banks of the Myakka River and Deer Prairie Creek.

Directions and Parking

North: From I-75 Exit 193 - Jacaranda Blvd. Travel north on Jacaranda Blvd for 0.9 miles. Turn right onto Border Rd, travel 2.6 miles. Turn right onto South Moon Dr, travel 1.6 miles. Turn left onto Forbes Trail, travel 1.1 miles. Entrance is on the right with a parking area able to handle horse trailers.

South: From I-75 Exit 191 - N River Rd. Travel south-east on N River Rd for 5.5 miles. Turn left onto US-41 S. S Tamiami Trail, travel 1.1 miles. Make a U-turn at Lazy River Rd, travel 0.2 miles. Entrance is on right. Parking area is 1 mile into the preserve (unpaved).

Restrooms and Water

No facilities available on site; Water trough available for horses, near trail marker 144

SCAT Bus Stop and Route

North: No routes available

South: Monday through Saturday - Route 9; Sunday Route 9S



What Visitors Might See

Gopher tortoises, alligators, river otter, wild turkey, swallow-tailed kite, Florida scrub-jays, wading birds, St. John's wort, tarflower and pine lily

Recreational Opportunities

Hiking, Picnicking, Birding, Paddling, Fishing, Bicycling, Horseback Riding

- Approximately 70 miles marked, unpaved trails through diverse habitats
- Horseback riding trails accessible ONLY from North entrance
- North entrance paddling access does not accommodate launching; Launch located near South entrance

Nearby Recreation Lands

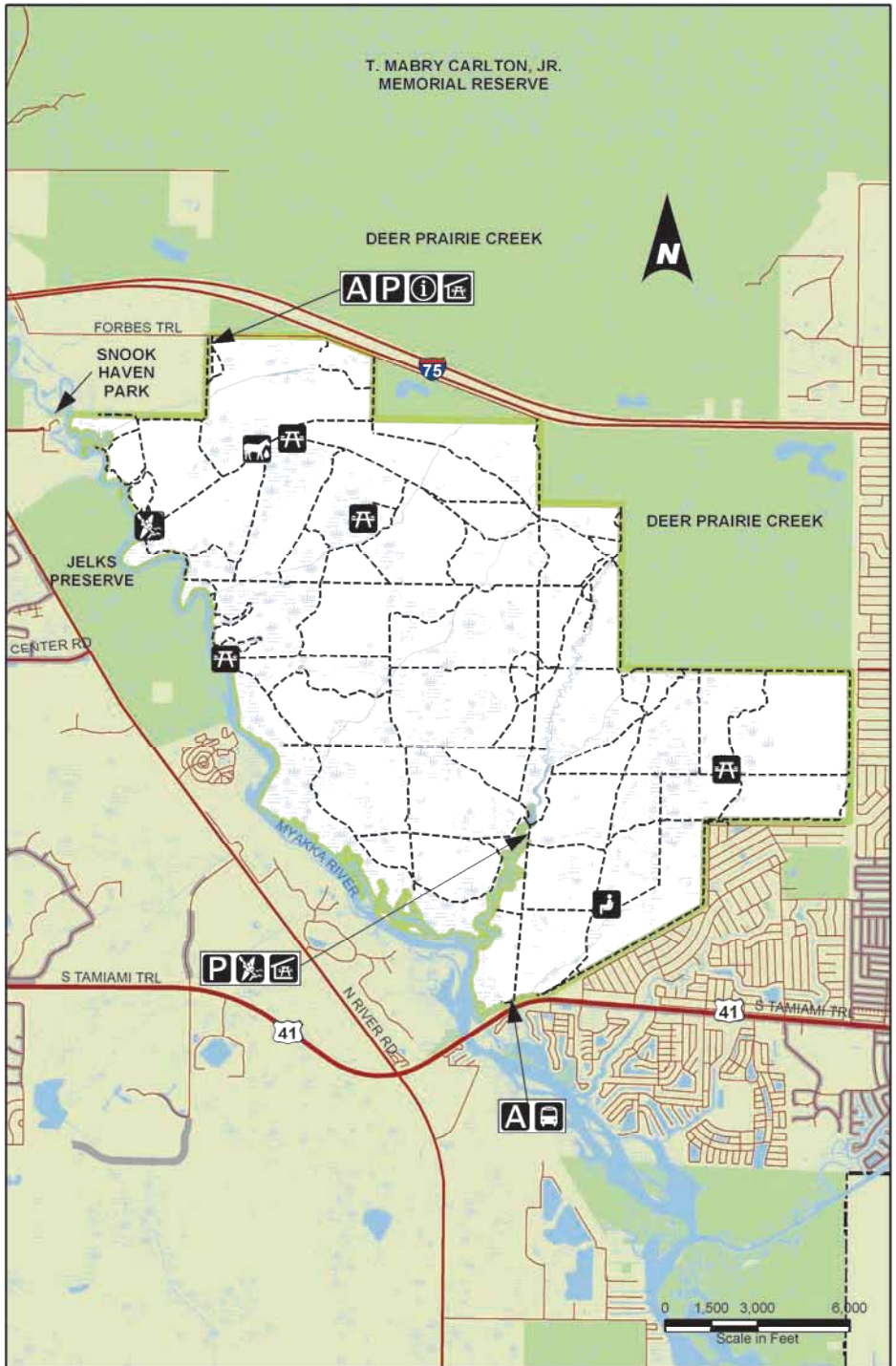
- T. Mabry Carlton, Jr. Memorial Reserve
- Jelks Preserve
- Snook Haven Park

Watershed

Myakka River



T. MABRY CARLTON, JR.
MEMORIAL RESERVE



At A Glance:



10 Jelks Preserve

2300 N River Rd, Venice, 34292

Size

614 acres

GPS Coordinates

-82.338187, 27.09104

About the Property

Acquired in 1999 with the generous support of the Jelks Family Foundation, Jelks Preserve borders the “Wild and Scenic” Myakka River, forever protecting a piece of the riverine floodplain. One can view the river at three different locations, while relaxing in the shade of mature live oak trees, festooned with epiphytes.

While exploring the preserve’s network of trails, visitors will traverse through a varied landscape of hammocks, pine flatwoods, and seasonal wetlands that unfolds glimpses of the river at key spots. While some trails may be cool as they stroll to the river through canopied hammocks, others may be open and sunny as they cross pine flatwoods.

Directions and Parking

From I-75 Exit 191 - N River Rd. Travel south-east on N River Rd for 1.4 miles. Entrance is on left, parking area located near entrance and walk-through access.

Restrooms and Water

Portable toilet seasonally available on site

SCAT Bus Stop and Route

No routes available



What Visitors Might See

Gopher tortoises, swallowtail butterflies and swallow-tailed kites, song birds and an assortment of wildflowers, such as Carolina jessamine and coralbean

Recreational Opportunities

Hiking, Picnicking, Birding, Fishing

- Approximately 8 miles marked, unpaved trails including a 3.3 mile outer loop trail through a diverse landscape
- Most of the trails experience flooding seasonally and after heavy rainfall

Nearby Recreation Lands

- Snook Haven Park
- Sleeping Turtles Preserve South
- Deer Prairie Creek Preserve

Watershed

Myakka River





At A Glance:



11 Snook Haven Park

5000 E Venice Ave, Venice, 34292

Size

2.5 acres

GPS Coordinates

-82.333884, 27.100779

About the Property

Acquired in 2006, Snook Haven park preserves a local gem of cultural heritage while increasing public access to the "Wild and Scenic" Myakka River. Snook Haven was established in 1948 as a fishing camp located along the Myakka River.

Today, the park is popular for shoreline fishing, boat tours, kayak and canoe rentals and its riverfront restaurant known for live entertainment and old Florida charm. While not specifically a conservation land, Snook Haven Park offers visitors a unique opportunity to discover natural Sarasota in a different way.

Directions and Parking

From I-75 Exit 191 - N River Rd. Travel south-east on N River Rd for 0.7 miles. Turn left onto E Venice Ave, travel 0.5 miles. Slight left to stay on E Venice Ave, travel 0.1 miles to entrance. Parking areas can accommodate trailers and are a short walk to the river, restaurant, and boat launch.

Restrooms and Water

Public facilities available on site

SCAT Bus Stop and Route

No routes available



What Visitors Might See

Manatees, American alligator, various song birds and waterfowl

Recreational Opportunities

Picnicking, Boating, Paddling, Fishing

- A small launch fee applies to boats and kayaks that are on trailers; Launching is restricted at the boat ramp on Thursdays, Saturdays and Sundays. For more information, call 941-485-7221
- For information about Snook Haven Riverfront Restaurant, entertainment, reservations, canoe rentals, and boat, kayak and canoe launching, call 941-485-7221 or visit www.snookhaven.com

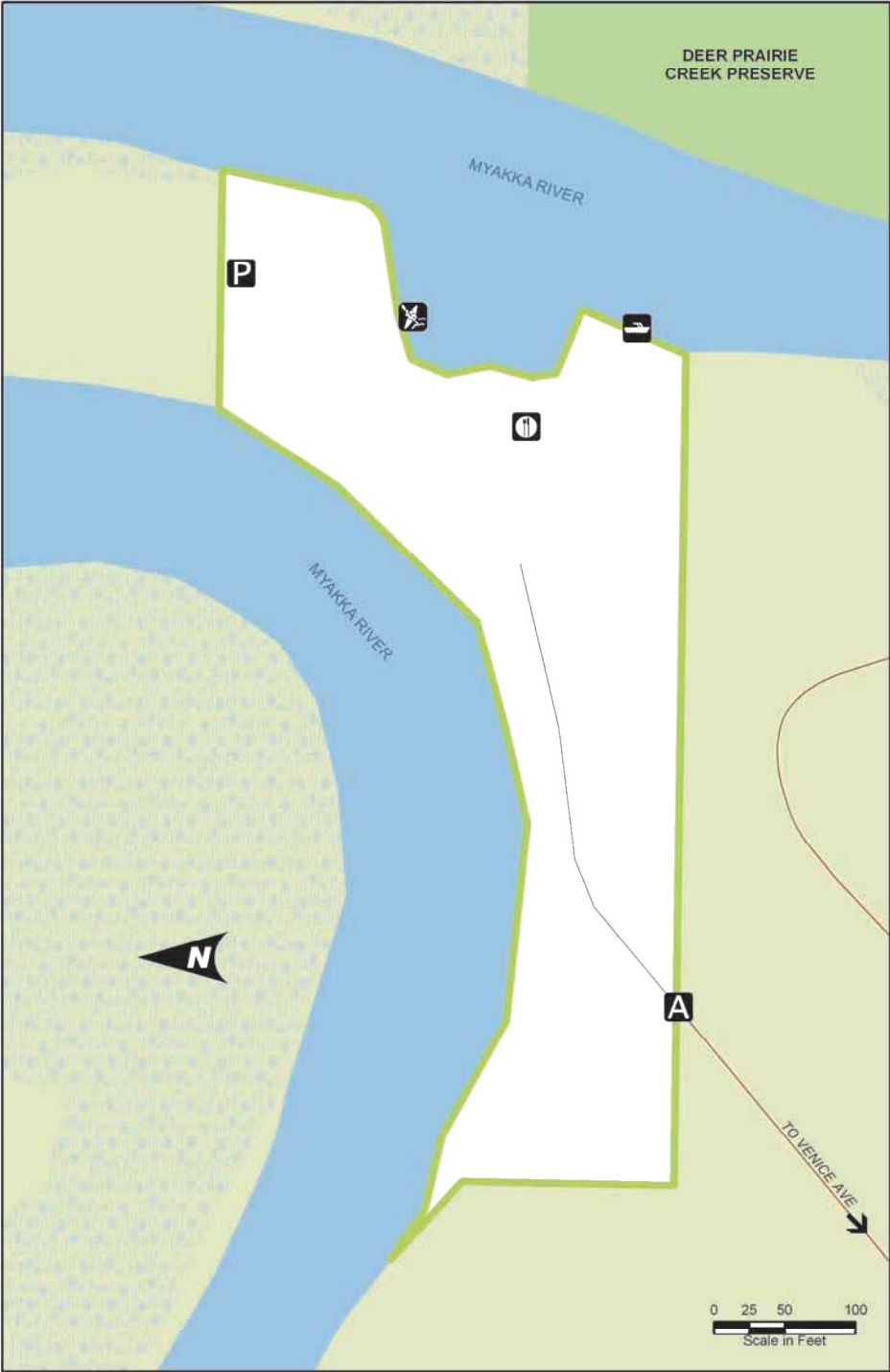
Nearby Recreation Lands

- Deer Prairie Creek Preserve
- Sleeping Turtles Preserve South
- Jelks Preserve

Watershed

Myakka River





At A Glance:



12 Sleeping Turtles Preserve North

3462 Border Rd, Venice, 34292

Size

174 acres

GPS Coordinates

-82.351988, 27.122678

About the Property

Acquired in 2003 and 2004, with the assistance of grant funding from Florida Communities Trust, Sleeping Turtles Preserve North provides multiple-use passive recreation opportunities and helps preserve the character and quality of the "Wild and Scenic" Myakka River. Named after a notation on an 1800's navigation map of the river, the preserve's trails wind through floodplain swamps and pine flatwoods and offers views of the river where visitors might see "sleeping" turtles basking on fallen trees.

Directions and Parking

From I-75 Exit 193 - Jacaranda Blvd. Travel north on Jacaranda Blvd for 0.9 miles. Turn right onto Border Rd, travel 2 miles. Entrance is on the left, limited parking is located near the entrance.

Restrooms and Water

Portable toilet is available on site

SCAT Bus Stop and Route

No routes available



What Visitors Might See

Gopher tortoises, swallow-tailed kites, osprey, alligators and an assortment of song birds and waterfowl

Recreational Opportunities

Hiking, Picnicking, Birding, Bicycling

- 4.7 miles of marked, unpaved trails most of which experience flooding seasonally and after heavy rainfall
- Leashed pets are allowed only on the area north of Border Road
- Paddling access from the Myakka River does not accommodate launching

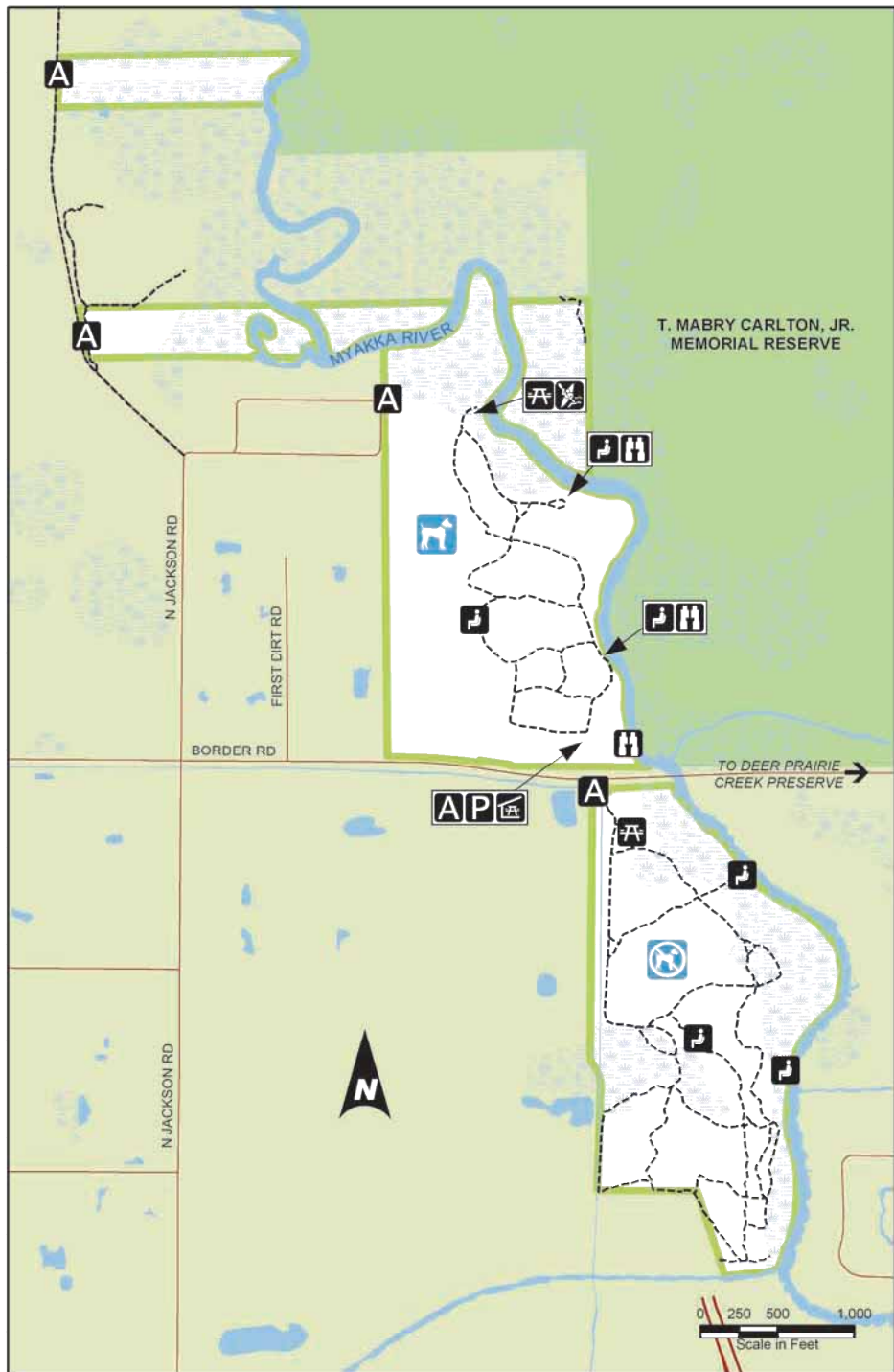
Nearby Recreation Lands

- T. Mabry Carlton Jr., Memorial Reserve

Watershed

Myakka River





At A Glance:



13 Sleeping Turtles Preserve South

2800 N River Rd, Venice, 34292

Size

213 acres

GPS Coordinates

-82.346281, 27.106561

About the Property

Acquired in 2002 with grant assistance from Florida Communities Trust, Sleeping Turtles Preserve South provides a buffer between the I-75 and River Road interchange and the “Wild and Scenic” Myakka River. The stretch of the river that parallels the preserve, was indentified on 1800’s navigation maps as “Sleeping Turtles”. Though none of the trails here lead to the river’s high banks, the preserve offers natural beauty, intimate hiking trails and opportunities for waterfront picnicking and fishing, just off the interstate.

Directions and Parking

From I-75 Exit 191 - N River Rd. Travel south-east on N River Rd for 0.6 miles. Entrance is on the left, just before Venice Ave. Limited parking is available along the road shoulders. Walk-through accesses are located along the boundary near the northeast corner of the intersection of E Venice Ave and N River Rd and near the southeast corner of the intersection of N River Rd and the I-75 southbound entrance ramp.

Restrooms and Water

None available on site

SCAT Bus Stop and Route

No routes available



What Visitors Might See

Gopher tortoise, bobcat, sandhill cranes, swallow-tailed kites, osprey, and an assortment of wildflowers, such as false foxglove, blazing star, pennyroyal and spider lily

Recreational Opportunities

Hiking, Picnicking, Birding, Fishing, Bicycling

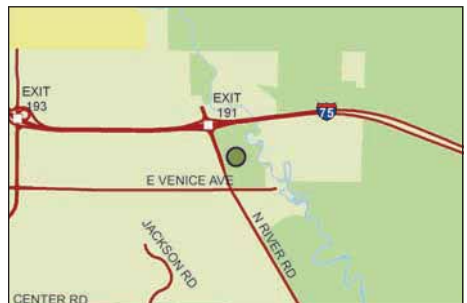
- 5.5 miles of marked, unpaved trails some of which experience flooding seasonally and after heavy rainfall
- Fishing and picnicking available at the pond

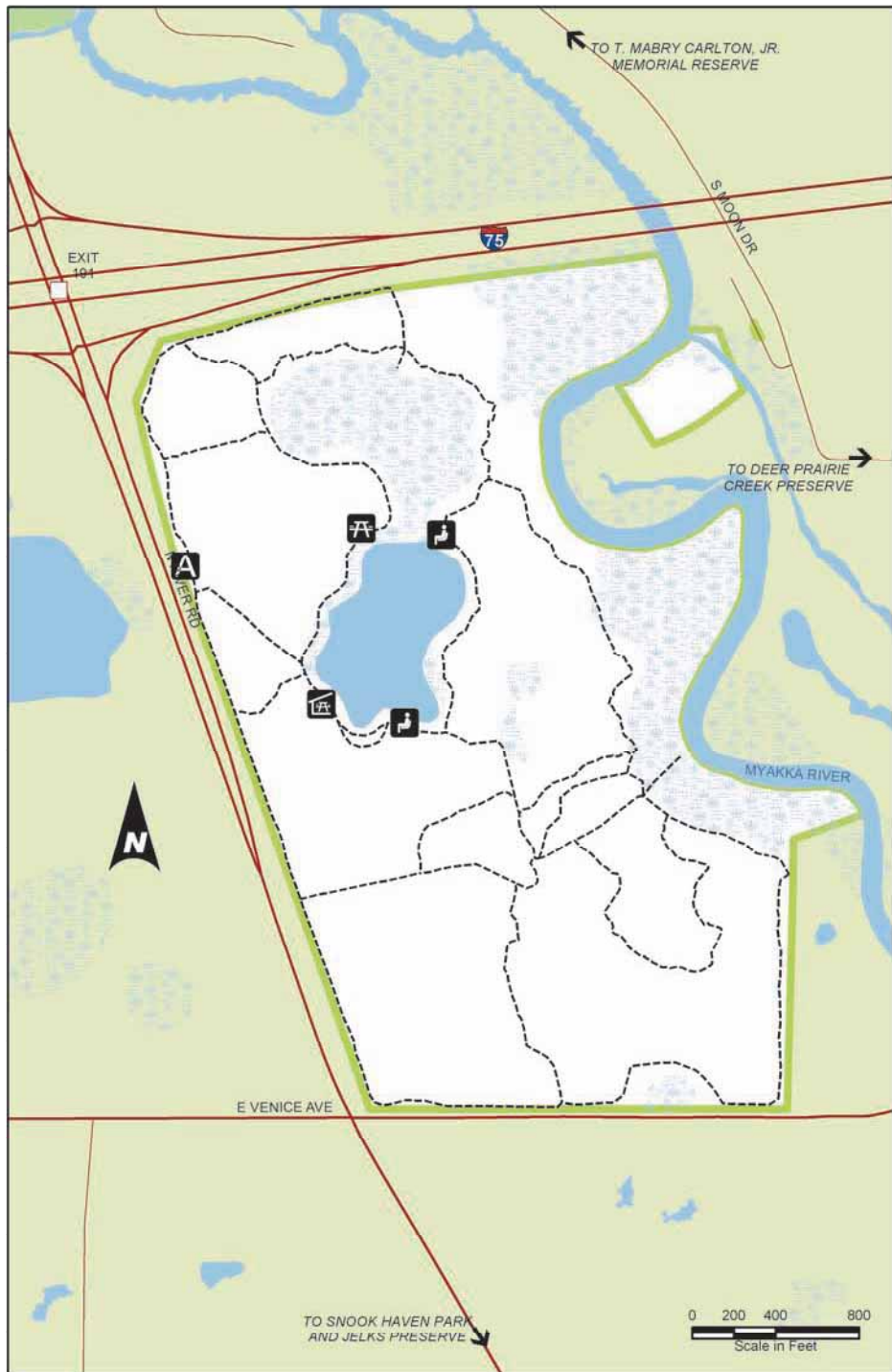
Nearby Recreation Lands

- Snook Haven Park
- Jelks Preserve

Watershed

Myakka River





At A Glance:



14 T. Mabry Carlton, Jr. Memorial Reserve

1800 Mabry Carlton Pkwy, Venice, 34292

Size

24,565 acres

GPS Coordinates

-82.342719, 27.12266

About the Property

Acquired between 1982 and 1984, the T. Mabry Carlton, Jr. Memorial Reserve encompasses an assortment of community values. The wetland-speckled expanses of pine flatwoods and dry prairies provide natural area conservation, unique wilderness recreation opportunities, cultural heritage preservation and public water supply protection. Named for Mabry Carlton, a former County commissioner and 5th generation Florida cattleman who was instrumental in the reserve's acquisition, the reserve remains a hallmark of Sarasota's legacy of stewardship.

Directions and Parking

From I-75 Exit 193 - Jacaranda Blvd. Travel north on Jacaranda Blvd for 0.9 miles. Turn right onto Border Rd, travel 2.6 miles. Turn left onto Mabry Carlton Pkwy, travel 0.3 miles. Follow signs to public park area entrance and parking area on right.

Restrooms and Water

Public restrooms available near the parking area

SCAT Bus Stop and Route

No routes available



What Visitors Might See

White-tailed deer, cattle, wild turkey, bobcats, swallow-tailed kites, various wading birds and an assortment of wildflowers, such as pine lily, tarflower and blue flag iris

Recreational Opportunities

Hiking, Picnicking, Birding, Paddling, Fishing, Camping, Bicycling, Horseback Riding

- The public park area has parking, picnic tables, a visitor's cabin, and interpretive nature trails
- The back-country offers more than 80 miles of marked, unpaved trails including the 12 mile Myakka Island Wilderness Trail which continues north to Myakka River State Park

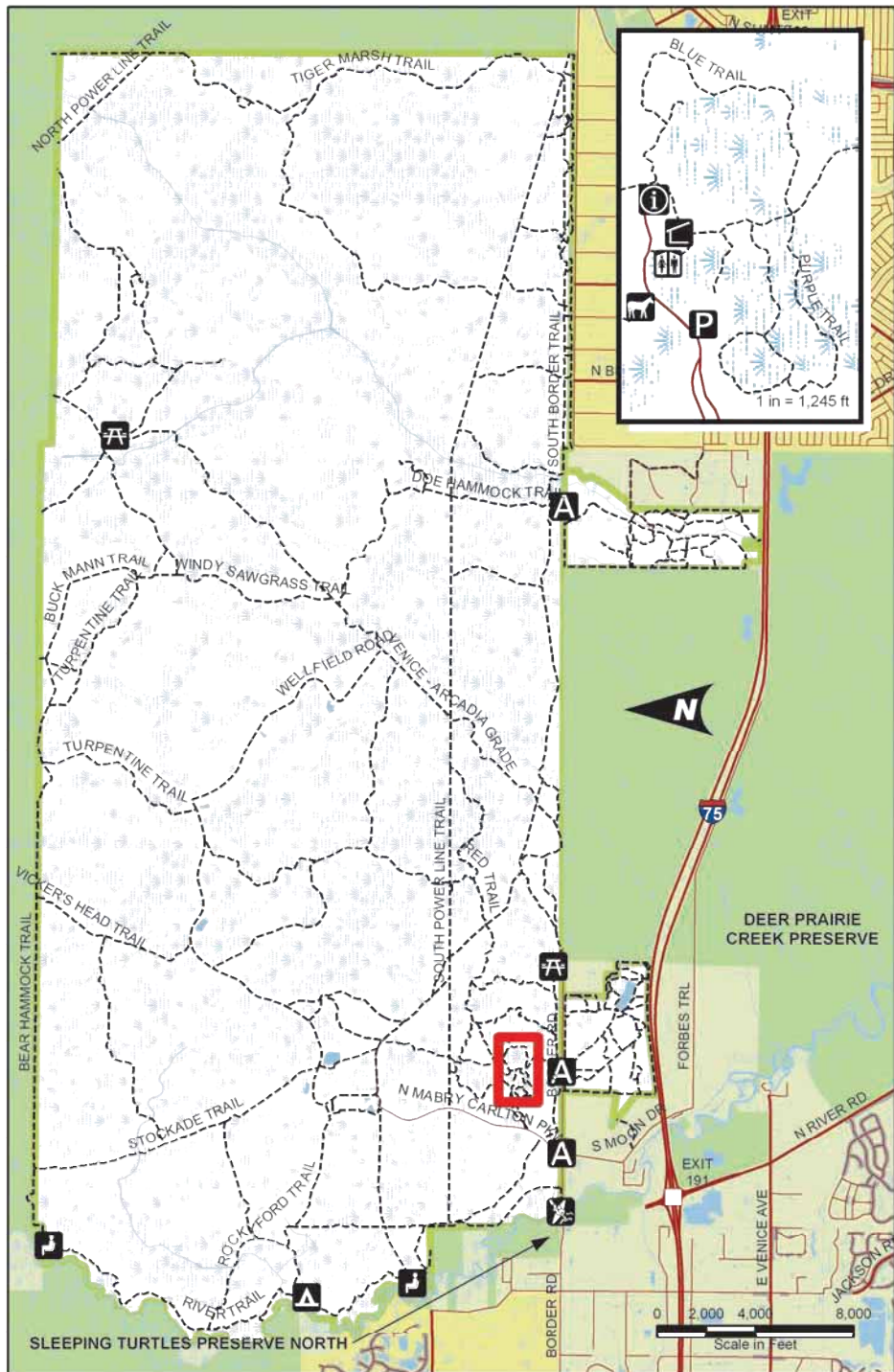
Nearby Recreation Lands

- Deer Prairie Creek Preserve
- Sleeping Turtles Preserve North

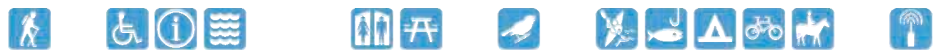
Watershed

Myakka River



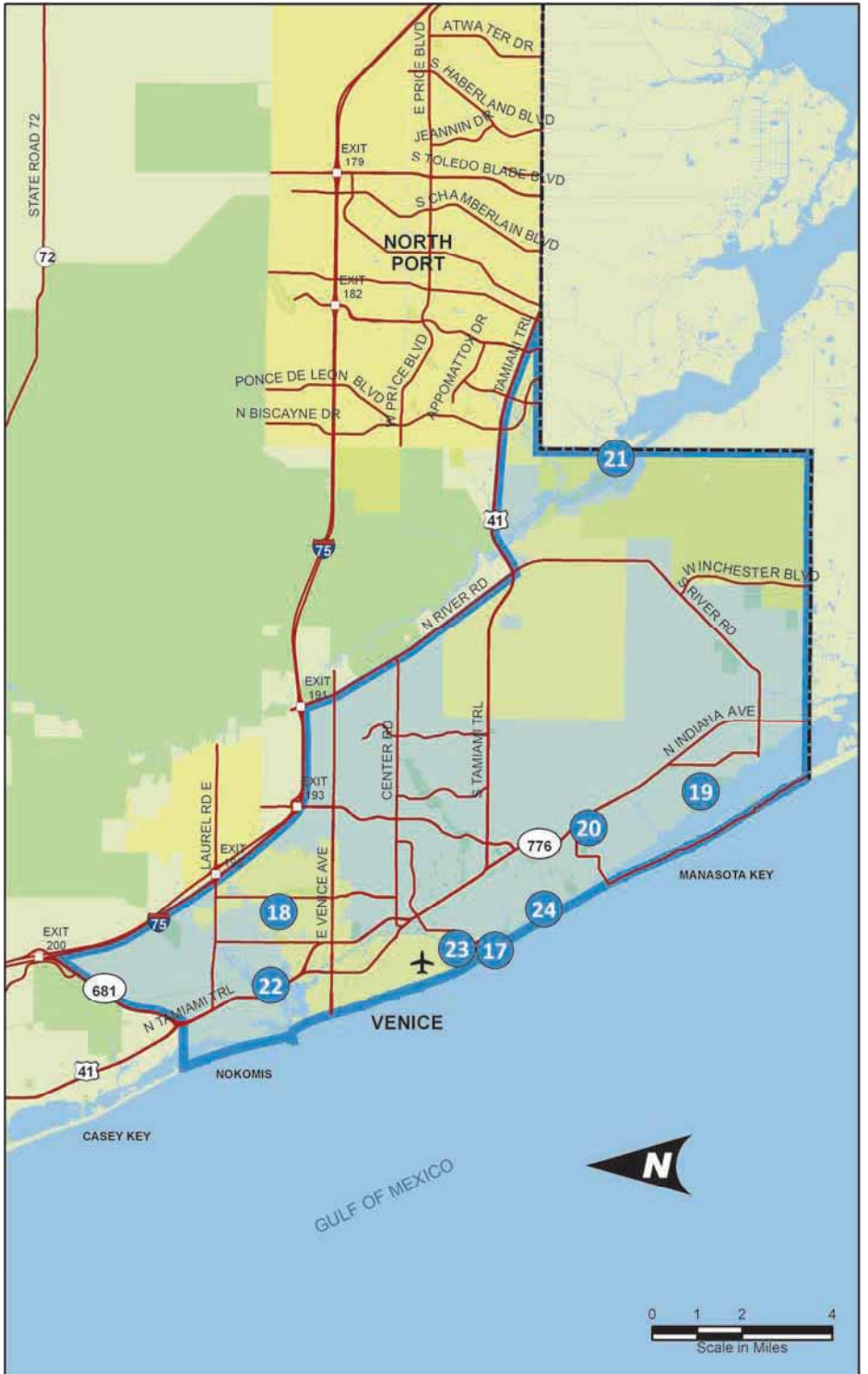


At A Glance:



Southern Region





17 Caspersen Beach

4100 Harbor Dr, Venice, 34285

Size

177 acres

GPS Coordinates

-82.44515, 27.060714

About the Property

Acquired in 1972 and 1985, Caspersen Beach is a rare, natural undeveloped beach. Its name, that of the Caspersen family who originally leased the land to Sarasota County in 1968, is now well-known for terrific shelling, prehistoric sharks' teeth, and unspoiled beachfront. The southern two thirds of the nearly two miles of beachfront have been left in a natural state and dune walkovers help preserve the shoreline. Nestled between the Intercoastal Waterway and Lemon Bay to the east and the Gulf of Mexico on the west, Caspersen Beach highlights not only its trademark dark-sand beaches and dunes but also enclaves of coastal hammock and scrubby flatwoods that beckon visitors to explore.



What Visitors Might See

Florida scrub-jays, shoreline birds, raccoons, loggerhead sea turtles, and native dune plants

Recreational Opportunities

Hiking, Picnicking, Playground, Birding, Paddling, Fishing, Bicycling, Swimming

- More than two miles of trails including a unique boardwalk through coastal hammock
- Provides a trailhead for the Venetian Waterway Trail
- **NO** lifeguards on duty

Nearby Recreation Lands

- Venetian Waterway Park
- Brohard Beach and Paw Park
- Venice Fishing Pier at Brohard Beach

Watershed

Dona/Roberts Bay

Directions and Parking

From I-75 Exit 200 - State Hwy 681. Travel south on State Hwy 681 for 3.3 miles. Continue on to N Tamiami Trail, travel 3.4 miles. Turn right onto W Venice Ave, travel 0.4 miles. Turn left onto Harbor Drive S, travel 3.1 miles to entrance and parking area on the left, a short distance to the park's amenities.

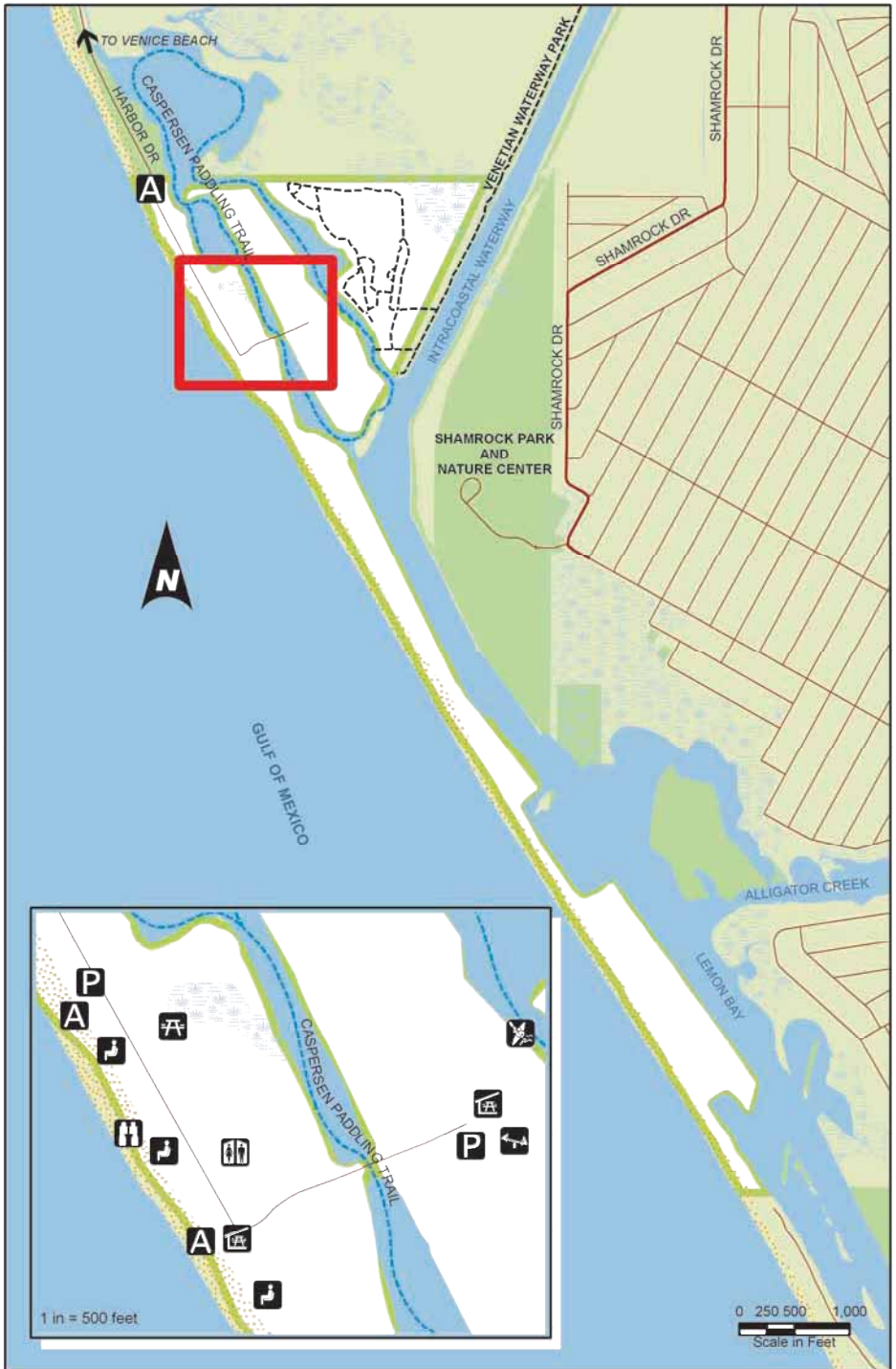
Restrooms and Water

Restrooms and water available on site

SCAT Bus Stop and Route

No routes available





At A Glance:



18 Curry Creek Preserve

East: 1500 Pinebrook Rd, Venice 34285
West: 1075 Albee Farm Rd, Venice, 34292

Size

80 acres

GPS Coordinates

East: -82.417324, 27.115563

West: -82.433459, 27.11602

About the Property

Acquired in 2002 with grant assistance from Florida Communities Trust, Curry Creek Preserve protects rare coastal longleaf pine flatwoods while providing valuable open space for a growing community. The creek, which runs along the preserve's boundary, is one of the few remaining coastal creeks in southwest Florida and is named for the Curry family, early pioneers that settled the area.

Hikers and paddlers will delight in the variety as scrub and pine flatwoods blend into tidal marshes and swamps along the creek's edge.

Directions and Parking

East: From I-75 Exit 195 - Laurel Rd E. Travel west on Laurel Rd E 0.3 miles. Turn left onto Pinebrook Road, travel 1.5 miles. Entrance is on the right, limited parking along easement.

West: From I-75 Exit 195 - Laurel Rd E. Travel west on Laurel Rd E 1.3 miles. Turn left onto Albee Farm Rd N, travel 1.5 miles. Entrance and parking area are on the left, close to walk-through access and kayak launch.

Restrooms and Water

None available on site

SCAT Bus Stop and Route

No routes available



What Visitors Might See

Gopher tortoises, alligators, river otters, eastern indigo snakes and an assortment of wading birds such as the roseate spoonbill and wood stork

Recreational Opportunities

Hiking, Picnicking, Birding, Paddling, Bicycling

- Just over 1.5 miles of marked, unpaved trails, that offer views of Curry Creek; Some trails may experience flooding seasonally and after heavy rainfall
- Kayak launch accessible from West entrance

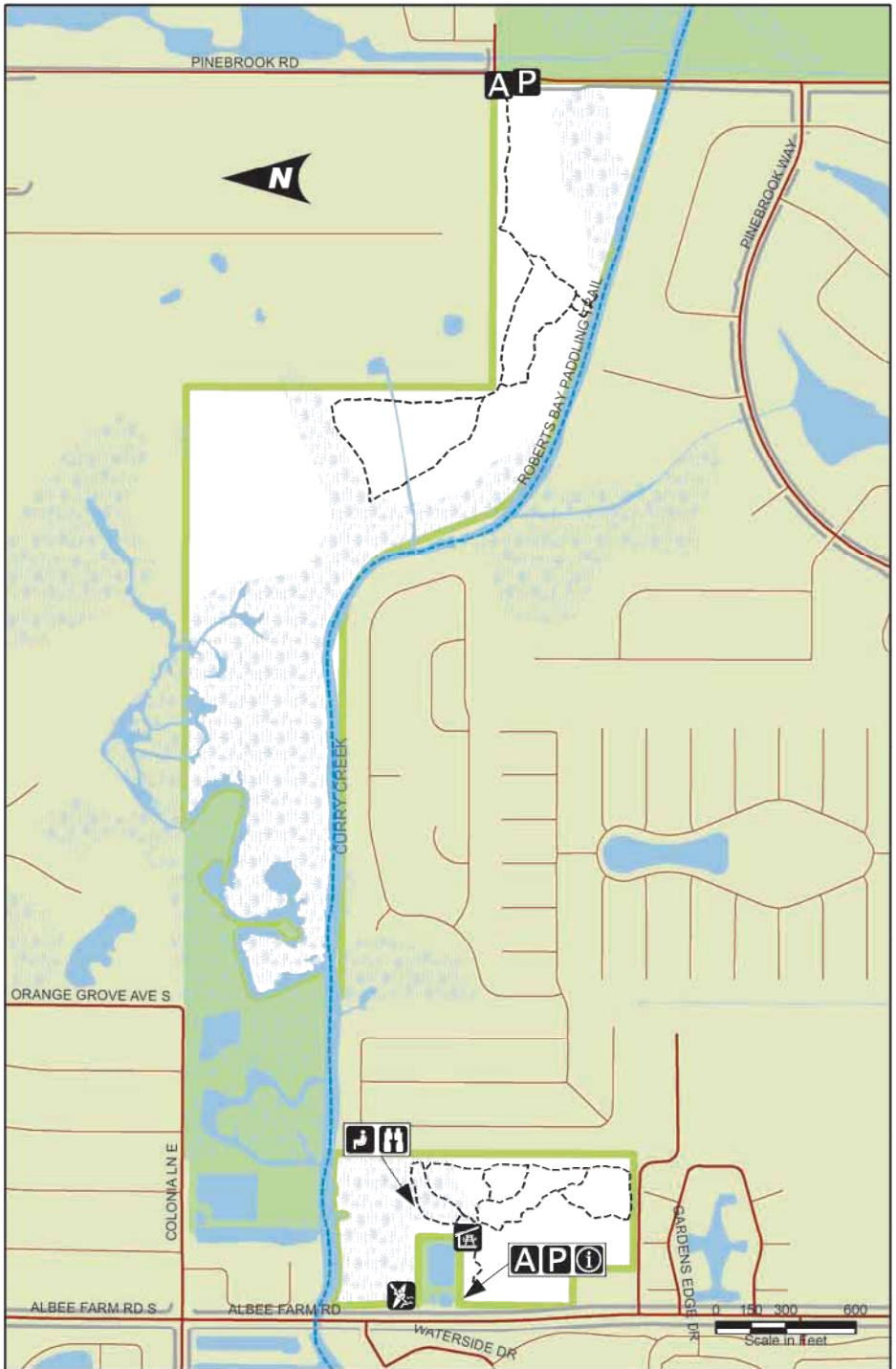
Nearby Recreation Lands

- Pinebrook Park
- Legacy Trail
- Pocono Trail Preserve
- Venice Train Depot

Watershed

Dona/Roberts Bay





At A Glance:



19 Lemon Bay Park and Environmental Center

570 Bay Park Blvd, Englewood, 34223

Size

208 acres

GPS Coordinates

-82.373432, 26.97195

About the Property

Acquired in 1986, Lemon Bay Park has helped preserve the pine and scrubby flatwoods and natural shoreline along Lemon Bay.

Tucked in an urban location, the park also provides opportunities for outdoor recreation and environmental education.

Directions and Parking

From I-75 Exit 193 - Jacaranda Blvd. Travel south on Jacaranda Blvd toward CR 765/Englewood/Venice for 5.1 miles. Turn left onto FL-776/Englewood Rd, travel 4.1 miles. Turn right onto Old Englewood Rd, travel 1 mile. Slight right onto Kilbourne Ave, travel 0.2 miles. First right onto Morrison Ave, then first left on Curtis Blvd. Take first right on Brengle Ave. Entrance is ahead with parking near the Environmental Center.

Restrooms and Water

Public facilities and water available on site

SCAT Bus Stop and Route

A few blocks to bus stop. Monday through Saturday - Route 16



What Visitors Might See

Gray fox, bobcats, river otters, raccoons, butterflies, and a variety of birds such as anhinga, bald eagle, snowy egret, and flycatcher frigate birds

Recreational Opportunities

Hiking, Picnicking, Birding, Paddling, Fishing, Bicycling

- Nearly 3.5 miles of marked, unpaved trails, with overlooks of Lemon Bay. Mobility limited accessibility
- Picnic pavilion and indoor meeting space available for reservations, call 941-861-5000 for more information
- Paddling launch available

Nearby Recreation Lands

- Indian Mound Park
- Manasota Scrub Preserve
- Englewood Sports Complex

Watershed

Dona/Roberts Bay





At A Glance:



20 Manasota Scrub Preserve

2695 Bridge St, Englewood, 34223

Size

145 acres

GPS Coordinates

-82.393968, 27.020561

About the Property

Acquired between 2000 and 2002 with grant assistance from Florida Communities Trust, Manasota Scrub Preserve is home to one of the remaining scattered pockets of scrub habitat. The preserve is named for this habitat and one of the earlier landowners, the Manasota Land and Timber Company.

The preserve's system of trails and boardwalks offers picturesque views of a variety of upland and wetland habitats right within a suburban community. Unwind and enjoy nature on one of the benches that you will find along the trail.

Directions and Parking

From I-75 Exit 193 - Jacaranda Blvd. Travel south on Jacaranda Blvd toward CR 765/Englewood/Venice for 5.1 miles. Turn left onto Englewood Rd, travel 1.6 miles. Turn right onto Manasota Beach Rd, travel 0.2 miles. Turn left on Bridge St. Entrance is on the left with limited parking area and an ADA-compliant parking spot close to an accessible scenic boardwalk.

Restrooms and Water

None available on site

SCAT Bus Stop and Route

One block to bus stop. Monday through Saturday - Route 16



What Visitors Might See

Gopher tortoises, northern quail, swallowtail butterflies, great horned owls, and an assortment of wildflowers including grassleaf goldenaster and blazing star

Recreational Opportunities

Hiking, Picnicking, Birding

- Approximately 1.5 miles of unpaved, marked trails some of which experience flooding seasonally and after heavy rainfall

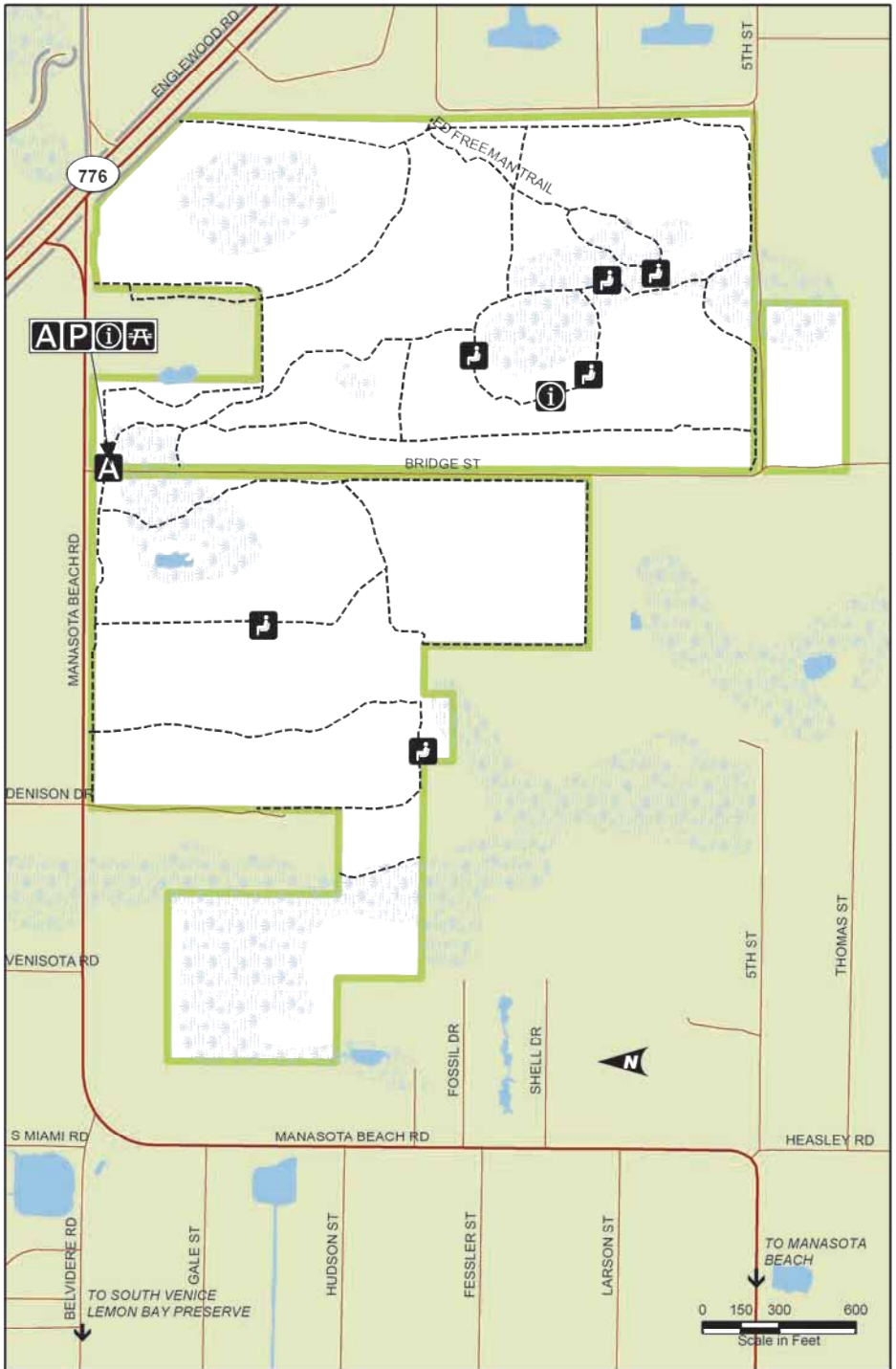
Nearby Recreation Lands

- Manasota Beach
- South Venice Lemon Bay Preserve
- Shamrock Park and Nature Center
- Venice Area Audubon Rookery

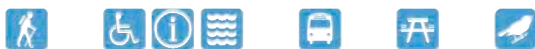
Watershed

Lemon Bay





At A Glance:



21 Myakka Islands Point

1289 Campbell St, Port Charlotte, 34293

Size

100 acres

GPS Coordinates

-82.25526, 27.01062

About the Property

Acquired in 2006, Myakka Islands Point is a highly productive and ecologically important site. The expansive tidal marsh that surround an "island" of upland flatwoods provides important habitat for wading birds and fish. Catching a glimpse of the "Wild and Scenic" Myakka River, it is easy to understand this region's historic associations with fishing, navigable waterways and Native American culture.

Directions and Parking

From I-75 Exit 191 - N River Rd. Travel south on N River Rd toward North Port for 5.5 miles. Turn left onto US-41 S/S Tamiami Trail, travel 4.1 miles. Turn right onto North Port Blvd, travel 0.8 miles. Turn right onto Chancellor Blvd, travel 1 mile. Chancellor Blvd turns left and becomes Campbell St, travel south on Campbell St 1.4 miles. Entrance is on the right, parking area is just inside entrance.

Restrooms and Water

None available on site

SCAT Bus Stop and Route

No routes available



What Visitors Might See

American kestrels, swallow-tailed kites, and a variety of wading birds and amphibians

Recreational Opportunities

Hiking, Birding

- Approximately 2 miles unpaved, marked trails with rest station bench areas sporting wonderful views of the Myakka River, a wonderful array of natural communities and areas rich with history

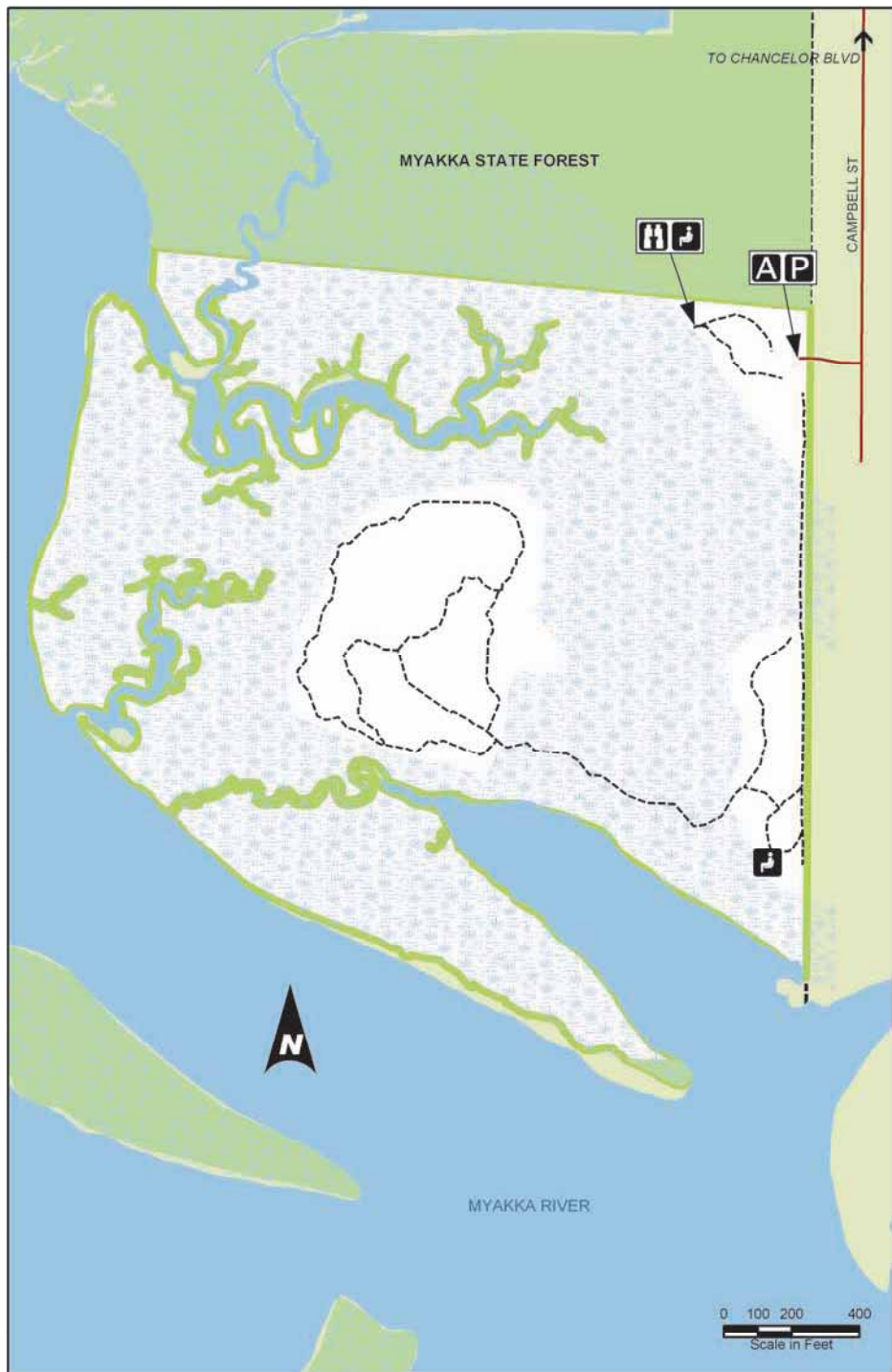
Nearby Recreation Lands

- Myakka River State Park
- Marina Park
- Dallas White Park

Watershed

Myakka River





At A Glance:



22 Pocono Trail Preserve

189 Pocono Trl, Nokomis, 34275

Size

8.2 acres

GPS Coordinates

-82.449284, 27.117776

About the Property

Acquired in 2002, Pocono Trail Preserve helps maintain the health of the Shakett Creek estuary system, and provides important habitat, open space and water access along a major urban corridor. The preserve is named for the street where it is located, Pocono Trail, which was originally named by Dr. Fred Albee, an early settler of Nokomis and owner of the Pollyanna Inn which, in 1922, was located on the land that is now the preserve. Today, the preserve's shady trails wind through maritime hammock and scrubby flatwoods and are punctuated by rest benches that offer charming views of the creek.

Directions and Parking

From I-75 Exit 195 - Laurel Rd. Travel west on Laurel Rd for 2.8 miles. Turn left onto US-41 S/N Tamiami Trl, travel south 1.7 miles. Turn left onto Colonia Ln, travel 0.3 miles. Take third left onto Pocono Trl E, travel 0.2 miles. Entrance will be on right. Very limited parallel parking is available along road shoulder next to the wood fence. Visitors are encouraged to park at Nokomis Community Center, a two block walk.

Restrooms and Water

Portable toilet and water available at Nokomis Community Center

SCAT Bus Stop and Route

Monday through Friday - Route 17



What Visitors Might See

Gopher tortoises, osprey, grey squirrels, and an assortment of wading birds such as the little blue heron, snowy egret, white ibis and wood stork

Recreational Opportunities

Hiking, Picnicking, Birding, Fishing

- Approximately 1 mile of shady, unmarked, unpaved trails

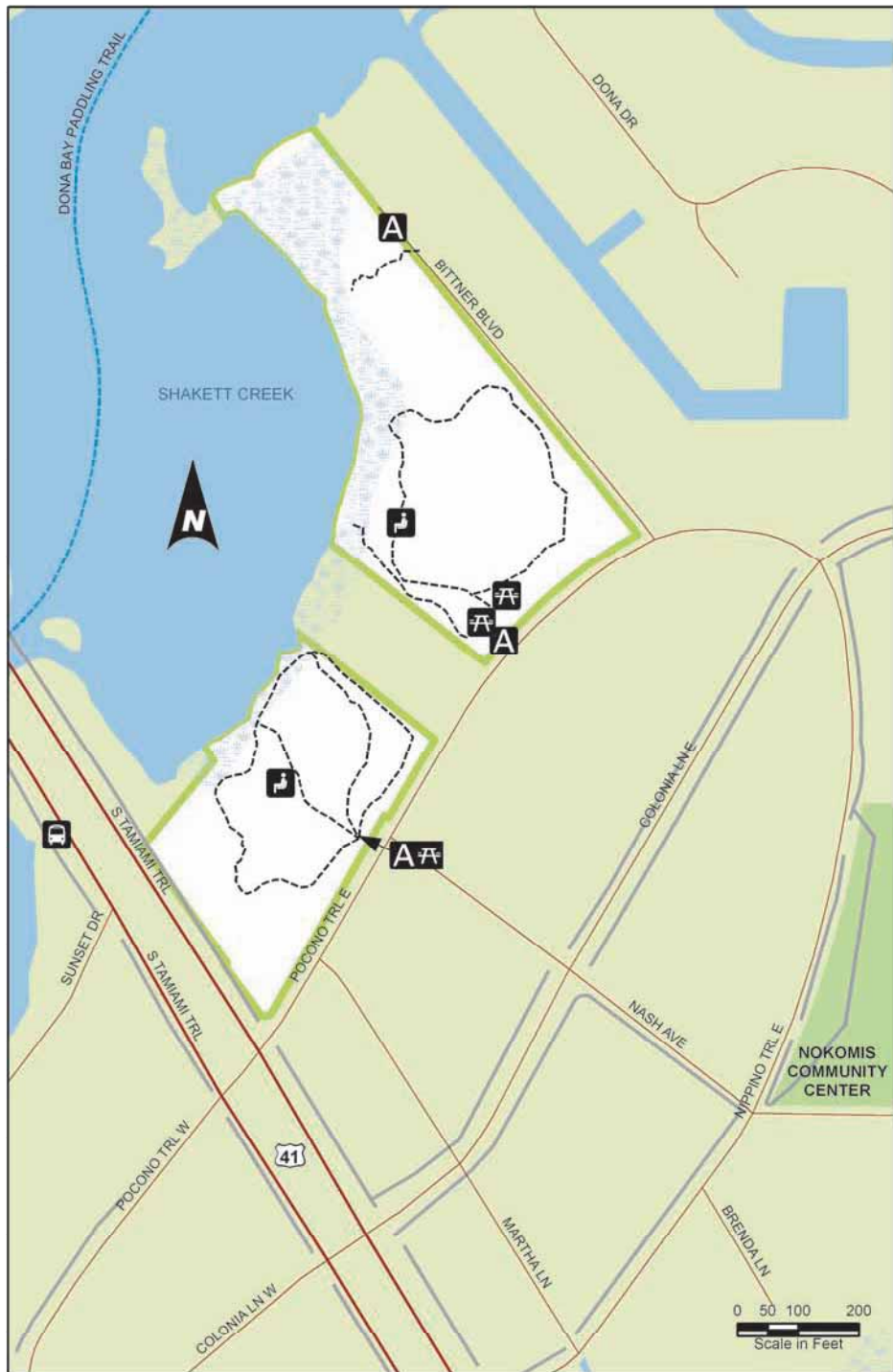
Nearby Recreation Lands

- Nokomis Community Park
- Legacy Trail
- Curry Creek Preserve
- Laurel Park

Watershed

Dona/Roberts Bay





At A Glance:



23 Shamrock Park and Nature Center

3900 W Shamrock Dr, Venice, 34293

Size

80 acres

GPS Coordinates

-82.433587, 27.051644

About the Property

Shamrock Park and Nature Center balances a multiplicity of community values. The park provides opportunities for nature study, educational hikes, environmental programs as well as facilities for active recreation. However, it also serves as important habitat for Florida's only endemic bird, the Florida scrub-jay. As a trail head for the Venetian Waterway Trail the park supports a connected, active community and allows visitors to walk, bike or roller blade from Shamrock Park to downtown Venice, the historic train depot and Caspersen Beach.

Directions and Parking

From I-75 Exit 200 SR 681 South toward Venice traveling approx 3 miles to North Tamiami Trail/US 41. Turn left onto N. Tamiami Trail for approx. 2.7 miles to the Venice Bypass continuing approx. 3.2 miles to Shamrock Drive. Turn right on Shamrock Drive 1.7 miles to the park entrance on your right. Parking areas are a short walk to the Nature Center, park amenities and trails.

Restrooms and Water

Available on site at Nature Center

SCAT Bus Stop and Route

Monday through Saturday - Route 16;
Sunday - Route 1713



What Visitors Might See

Gopher tortoises, osprey, Florida scrub-jay, and views of the Intercoastal Waterway

Recreational Opportunities

Hiking, Picnicking, Playground, Birding, Bicycling, In-line Skating, Tennis, Basketball

- About 3.5 miles of paved and unpaved, marked trails
- Trail head for the south east portion of the Venetian Waterway Trail
- A large recreation pavilion and indoor meeting space are available for reservation, call 941-861-5000 for more information

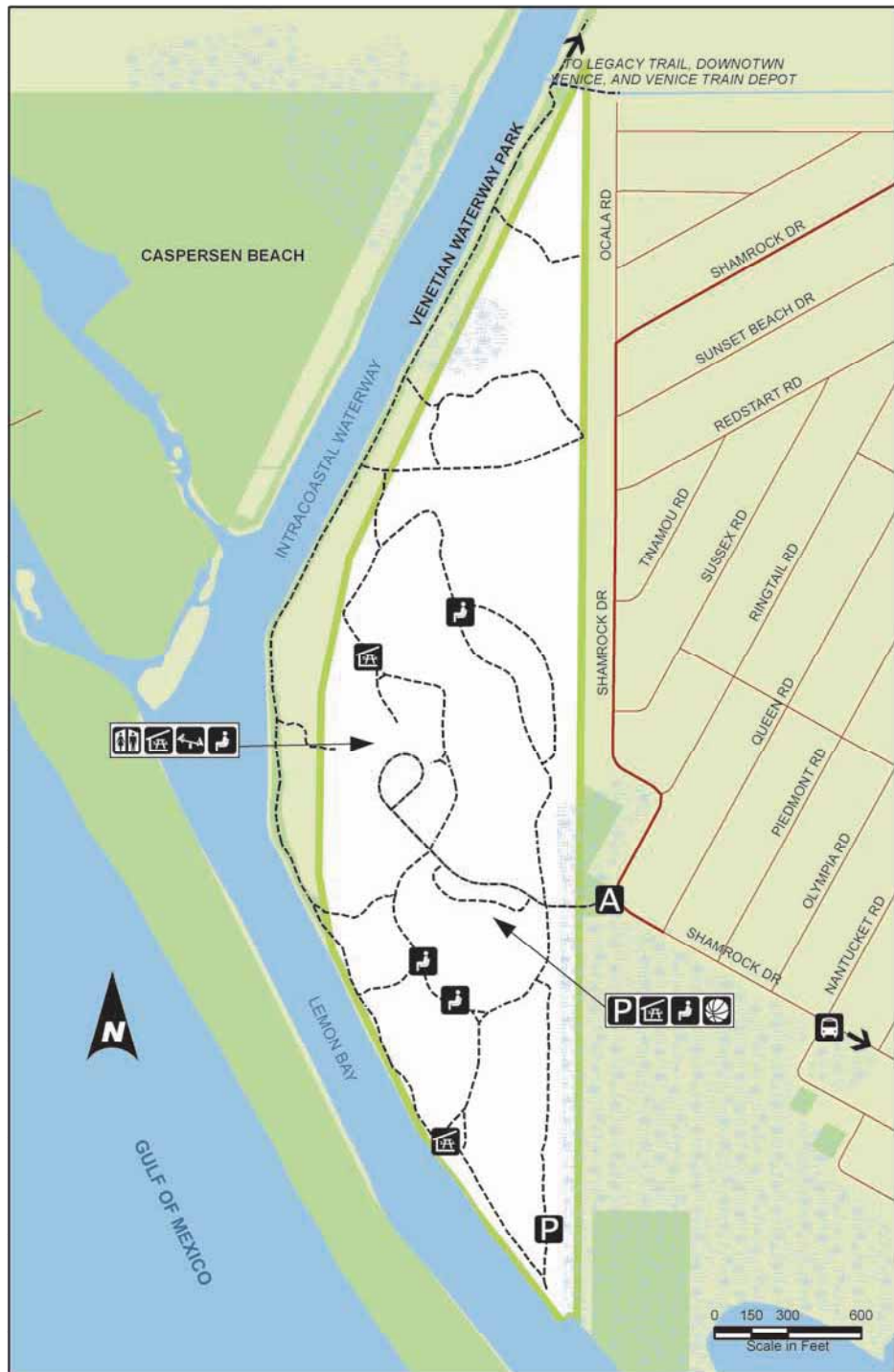
Nearby Recreation Lands

- Venetian Waterway Park
- South Venice Lemon Bay Preserve
- Caspersen Beach

Watershed

Lemon Bay





At A Glance:



24 South Venice Lemon Bay Preserve

6200 Osprey Rd, Venice, 34293

Size

225 acres

GPS Coordinates

-82.410164, 27.022834

About the Property

Acquired incrementally since 1999 with some grant assistance from Florida Communities Trust, South Venice Lemon Bay Preserve contains some of the last remaining undeveloped bay shorelines in the County. These lands protect the water quality and health of the Lemon Bay estuary, a State Aquatic Preserve for which it's named.

Located in the suburb of south Venice, this preserve offers a peaceful retreat for visitors and a refuge for several protected animals and plants.

Directions and Parking

From I-75 Exit 210 - Jacaranda Blvd. Travel south on Jacaranda Blvd toward Englewood/Venice/Sarasota County for 5.1 miles. Turn left onto Englewood Rd, travel 1.6 miles. Turn right onto Manasota Beach Rd, travel 0.7 miles. Slight right onto Belvidere Rd, travel 0.3 miles. Turn right onto Pheasant Rd, travel 0.2 miles. Turn left onto Macon Rd, travel 0.2 miles. Turn left onto Osprey Rd. Entrance is just south of the intersection of Macon Rd and Osprey Rd, with limited parking and walk-through access.

Restrooms and Water

None available on site

SCAT Bus Stop and Route

Several blocks to bus stop. Monday through Saturday - Route 13



What Visitors Might See

Mangroves, cord grasses, oak species, lupine, palaflox, coontie and Curtis's milkweed, gopher tortoises, Florida scrub-jays, bald eagles, river otters and an assortment of snakes, including the eastern coachwhip

Recreational Opportunities

Hiking, Picnicking, Birding, Fishing

- Approximately 8 miles unpaved, marked trails including a 1.6 mile scenic trail
- Some trails experience flooding seasonally and after heavy rainfall
- Paddling access from Lemon Bay does not accommodate launching

Nearby Recreation Lands

- Shamrock Park and Nature Center
- Manasota Scrub Preserve
- Woodmere Park and Paw Park

Watershed

Lemon Bay





At A Glance:



Discover More of Natural Sarasota

Other Places to Visit...

Sarasota County Government 941-861-5000 scgov.net

Sarasota Convention & Visitors Bureau 800-552-9799
sarasotafl.org

Discover Natural Sarasota discovernaturalsarasota.org

Sarasota County Area Transit (SCAT) 941-861-5000
scgov.net/SCAT

Florida Fish and Wildlife Conservation Commission (FWC)
Nuisance Alligator Hotline 866-FWC-GATOR (866-392-4286)
Recreational Fishing Licenses myfwc.com/license
Wildlife Alert Hotline 1-888-404-3922

The Legacy Trail - Rails to Trails www.scgov.net/LegacyTrail

Venetian Waterway Park 941-486-2626
venicegov.com/Park_links/venetian_waterway

Oscar Scherer State Park 941-483-5956
floridastateparks.org/oscarscherer

Myakka River State Park 941-361-6511 myakkariver.org

Sarasota Blueways Guide
sarasotabay.org/documents/SBNEP_Blueways_000.pdf

Paddle Sarasota
scgov.net/parksandrecreation/PaddleSarasota/PaddleSarasota.asp

Boating and Angling Guide to Sarasota County
scgov.net/EnvironmentalServices/Coastal/BoatingGuide.asp

Artificial Reef Guide
scgov.net/EnvironmentalServices/Coastal/ArtificialReef.asp

In Case of Emergency Dial 911

